

ALPINE



ALPINE



the **NEXT GENERATION** of **RVs**

www.keystonerv.com/Alpine

Keystone RV
Company



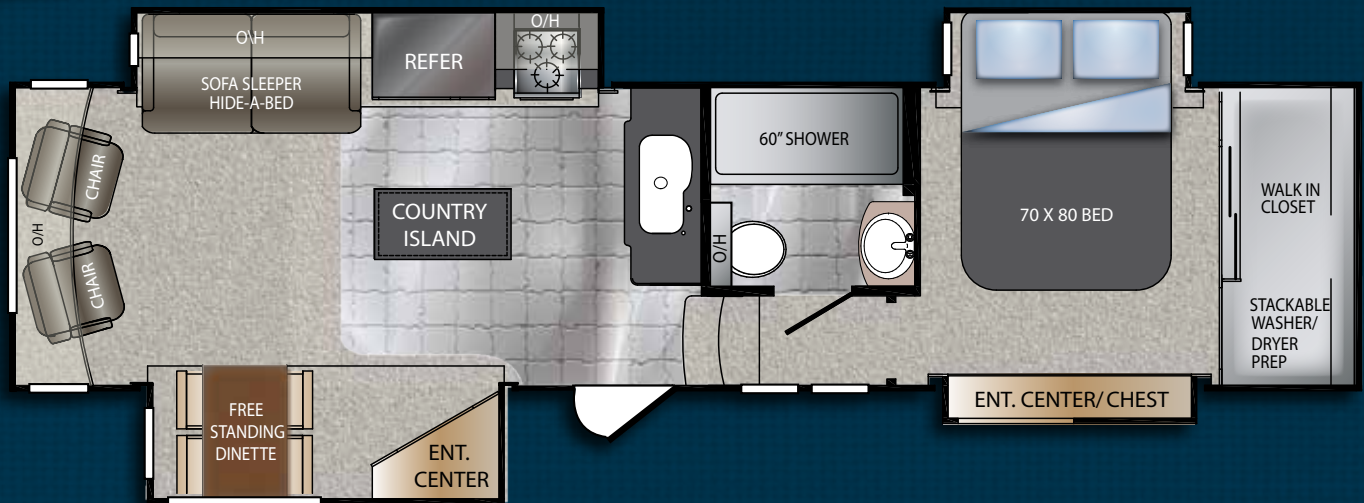
ALPINE

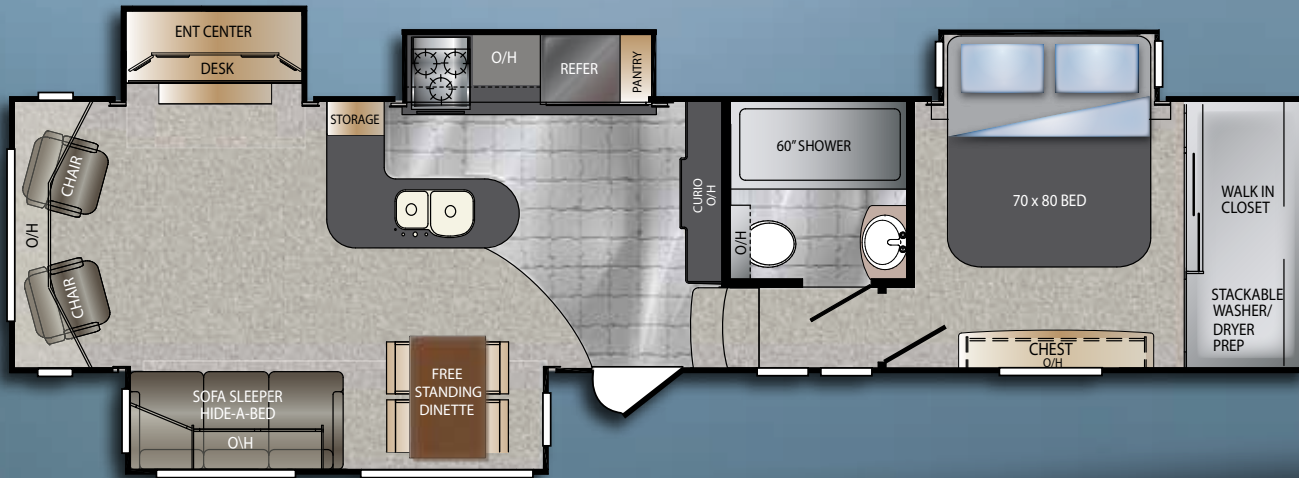
3250RL

Every seat in the 3250RL has a great view of the built-in entertainment center and fireplace. The kitchen features our hand crafted country island with a built-in wine rack, book shelves and huge storage cabinet and deep drawer. The beautiful Corian counter top provides additional work space while cooking or entertaining.

While this model is less than 37' long, it still boasts the same large 60" walk-in shower and king size bed that you'll find in most of the other larger Alpine plans. Don't forget about the huge cedar lined walk-in closet with an area that is prepped for stack washer and dryer.

Model	3250RL
Shipping Weight	11715
Carrying Capacity	3345
Hitch	2735
Length	36' 11"
Height	12' 8"
Fresh Water	66
Waste Water	50
Gray Water	82
LPG	60





Model	3450RL
Shipping Weight	12529
Carrying Capacity	2971
Hitch	2240
Length	39' 1"
Height	12' 8"
Fresh Water	66
Waste Water	50
Gray Water	82
LPG	60

ALPINE 3450RL

The 3450RL features a true walk-in, cedar lined closet in the master suite. The walk-in closet offers additional drawer storage as well as ample space for hanging apparel as do all Alpine models. Notice the tall slides and extra large windows – this creates a wide open feel in your living space as well as providing you with great views that you will enjoy for many, many years.

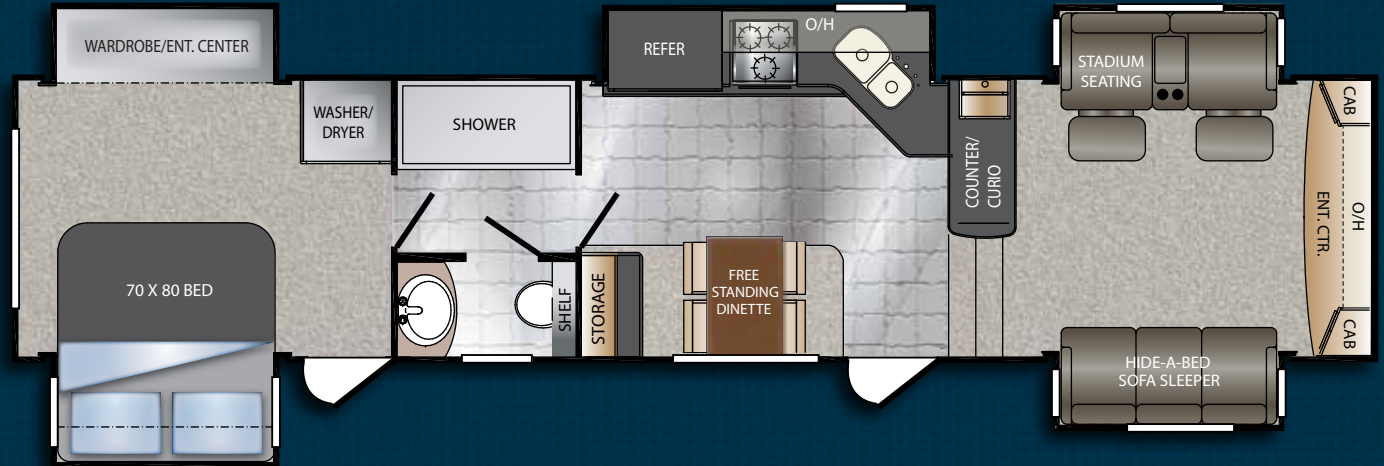
ALPINE

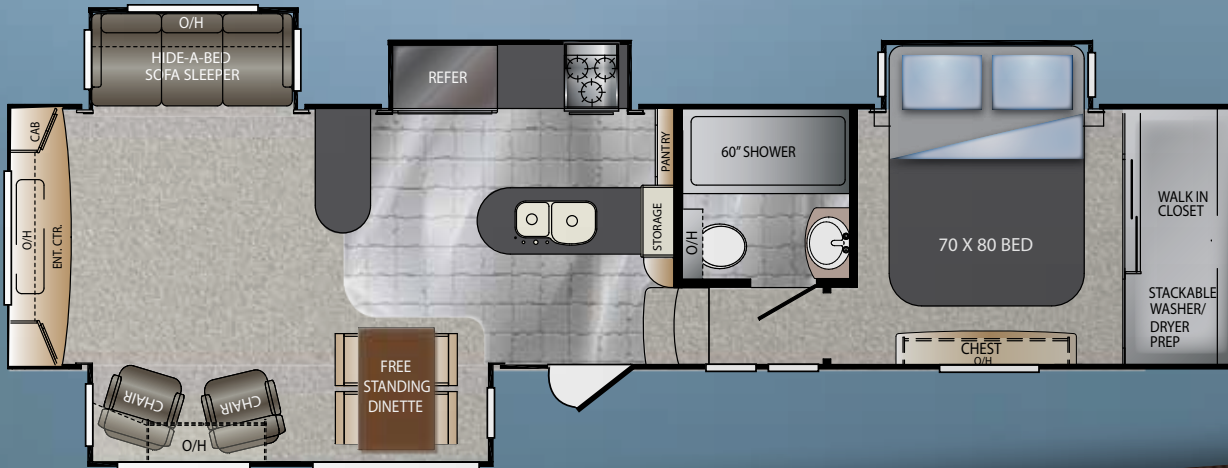
3495FL

Enjoy the comfort of "Stadium Seating" while viewing the large built-in entertainment center in our front living room Alpine 3495 plan. Step up to the cozy living area which overlooks the expansive kitchen and is perfect for entertaining.

The bath features a 60" shower and private lavatory and commode area. Note all the cabinets and storage throughout this model.

Model	3495FL
Shipping Weight	12377
Carrying Capacity	3123
Hitch	2295
Length	39' 5"
Height	12' 8"
Fresh Water	66
Waste Water	50
Gray Water	82
LPG	60





Model	3500RE
Shipping Weight	12422
Carrying Capacity	3078
Hitch	2235
Length	38' 7"
Height	12' 8"
Fresh Water	66
Waste Water	50
Gray Water	82
LPG	60

ALPINE 3500RE

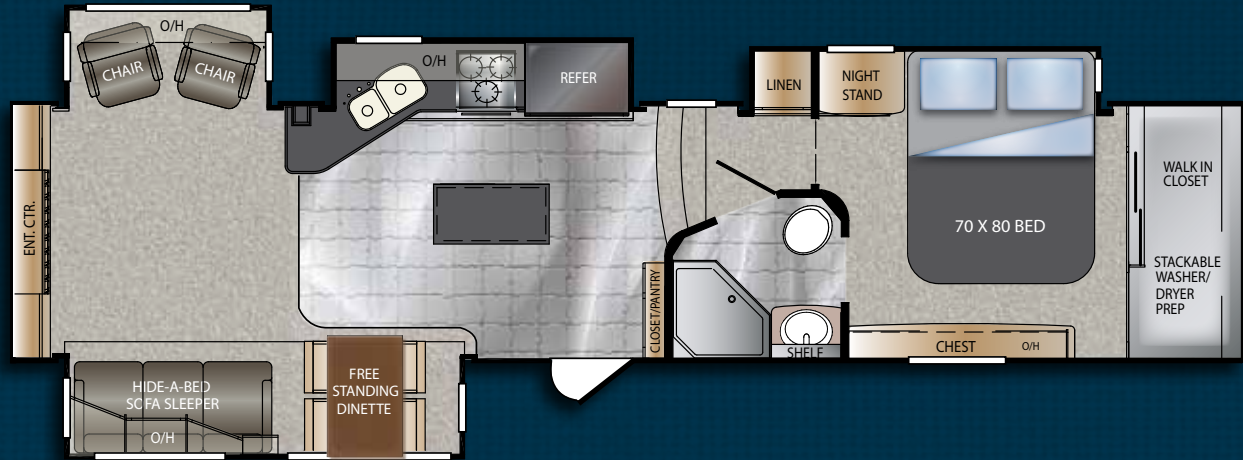
The rear entertainment center on the 3500RE features the Alpine's "true" surround sound system and a top rated, name brand television. With the electric retractable lift and a standard back window, you will enjoy the best of both worlds - easy viewing or great views.

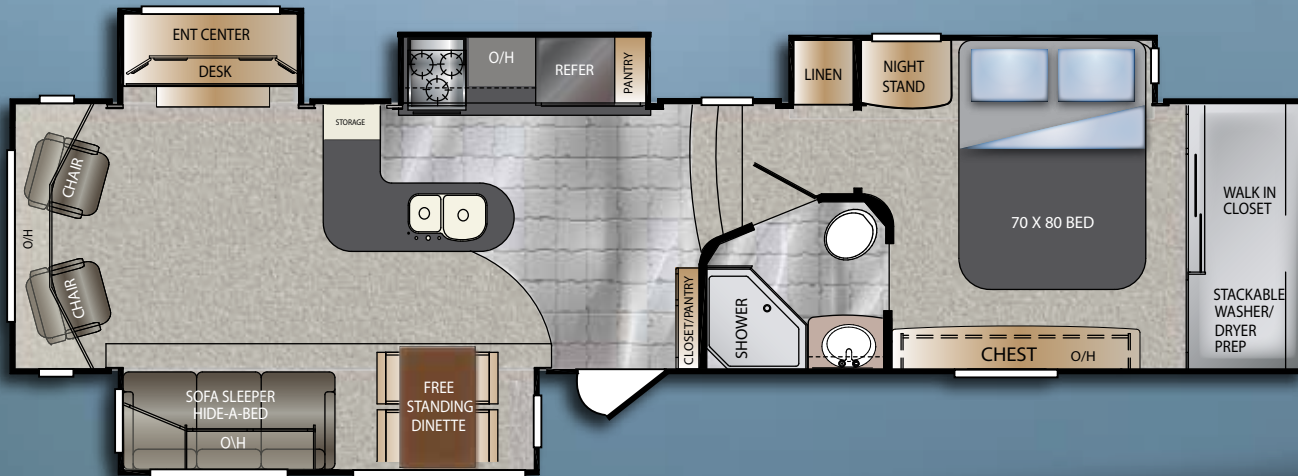
The kitchen features an abundance of pantry storage, a hidden trash container area and great counter top work area - all within view of guests, friends and family.

ALPINE 3535RE

The moment you enter this beautiful coach, you'll know you have to have it! The kitchen features a hand crafted country island with a built-in wine rack, book shelves plus a huge storage cabinet and deep drawer. The beautiful Corian counter tops provide ample work space while cooking or entertaining. Notice the rear Entertainment Center which features bead board accent walls with barrel shade lamps, glass cabinet doors and stone front fireplace. Your friends will love the look and feel of this incredible model.

Model	3535RE
Shipping Weight	12522
Carrying Capacity	2978
Hitch	2360
Length	39' 1"
Height	12' 8"
Fresh Water	66
Waste Water	50
Gray Water	82
LPG	60





Model	3555RL
Shipping Weight	12491
Carrying Capacity	3009
Hitch	2525
Length	39' 1"
Height	12' 8"
Fresh Water	66
Waste Water	50
Gray Water	82
LPG	60

ALPINE 3555RL

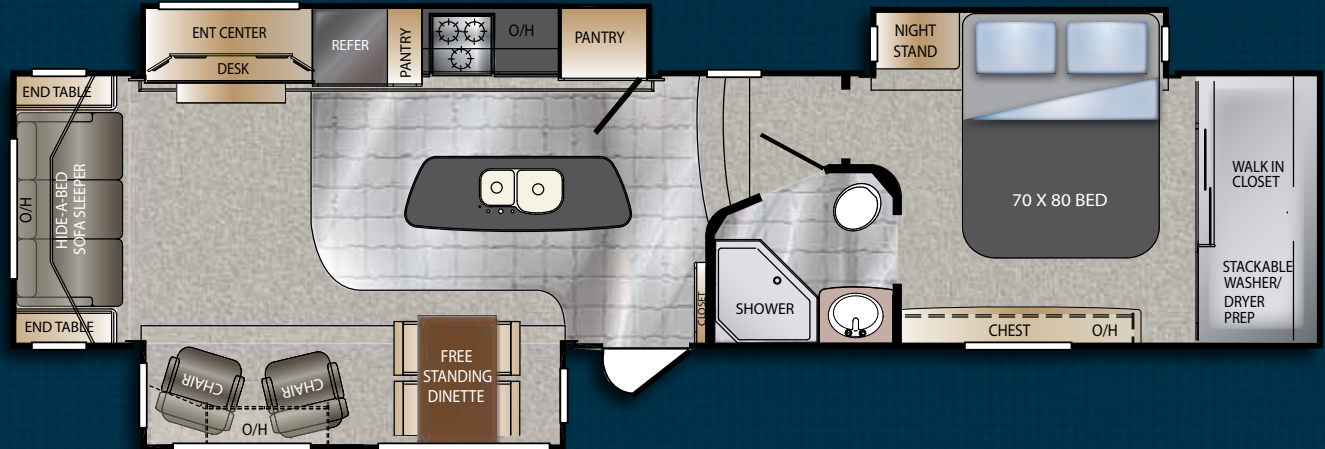
The bedroom suite of the 3555RL includes the most storage of any model in its class. As in all Alpines, the cedar lined walk-in closet has room for a stackable washer and dryer in a well ventilated area.

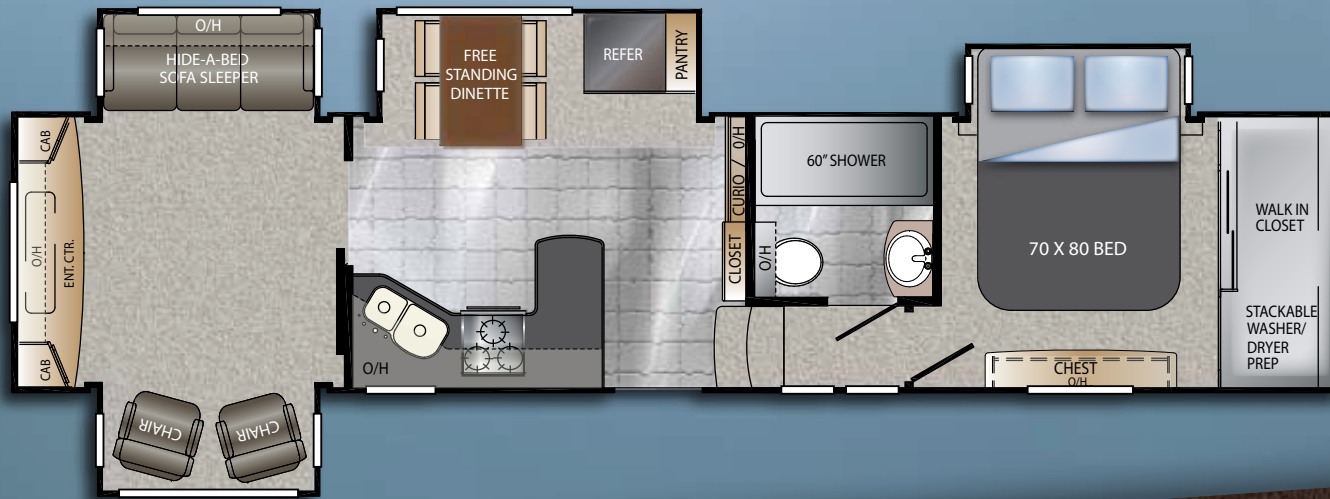
Everyone feels welcome and invited in with the Grand Entry area. The oversized staircase is framed on both sides with decorative metal railing leading to the master suite.

ALPINE 3600RS

In the 3600RS, the wall hugger chairs are situated directly across from the television for easy viewing. The beautiful Entertainment Center features a stone front fireplace with a hidden pull-out desk. If counter top space and storage are important, the oversized island and the Dutch Pantry with its pull-out, oversized drawers are the perfect combination.

Model	3600RS
Shipping Weight	12228
Carrying Capacity	3272
Hitch	2240
Length	39' 2"
Height	12' 8"
Fresh Water	66
Waste Water	50
Gray Water	82
LPG	60





Model	3700RE
Shipping Weight	12603
Carrying Capacity	2870
Hitch	2390
Length	39' 5"
Height	12' 8"
Fresh Water	66
Waste Water	50
Gray Water	82
LPG	60

ALPINE 3700RE

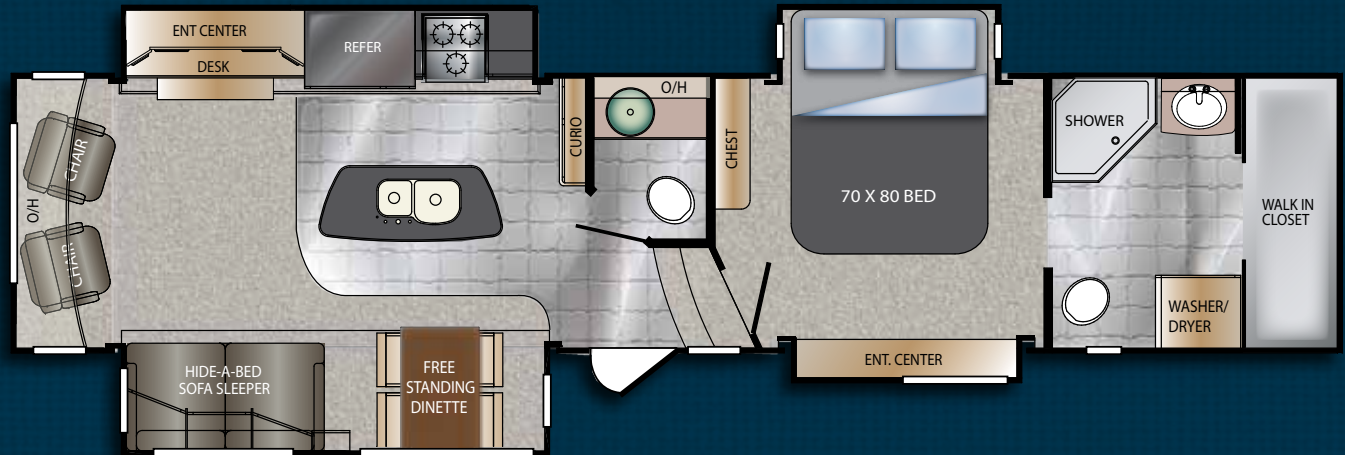
Inside the 3700RE bedroom, the cabinetry is nothing short of true Amish craftsmanship. The construction is of solid cherry including the cabinet doors, stiles and cabinet top. Enjoy the massive 60" shower in the bath, too!

This unique and popular floorplan incorporates a guest closet for extra storage. The 3700RE even has a standard 32" television in the kitchen/dining area

ALPINE 3720FB

For the "Full Time RVer's", this coach is just for you! The master suite features loads of built-in cabinets as well as a private bath with walk-in closet and area for stackable washer and dryer. The main living area has a separate half bath with beautiful glass vessel sink and elegant mirror with wall mounted lights. The kitchen has an island with under mount stainless steel sink as well as beautiful dark cherry hardwood cabinets and large side-by-side refrigerator.

Model	3720FB
Shipping Weight	12457
Carrying Capacity	3043
Hitch	2350
Length	39' 5"
Height	12' 8"
Fresh Water	66
Waste Water	82
Gray Water	82
LPG	60



ZERO DEGREE RATED

With an impressive list of industry-leading construction advancements, Alpine sets the bar for four season living.



WALL CONSTRUCTION (R-10)

1. High Gloss fiberglass exterior walls, baggage doors, and entry door
2. Dual 1/8" luan backers with staggered seams
3. High density block foam insulation
4. Radius window corner blocks for additional integrity
5. 2" Welded aluminum sidewall studs
6. Fiberglass batten insulation
7. Molded fiberglass cap with 4mm coated graphics
8. Metal backing strips for added support
9. Cambered steel cap backing for increased turning radius - "Max Turn"

ROOF CONSTRUCTION (R-28)*

10. Aluminum radius roof corner molding wrap
11. One-piece EPDM roof with 12-year warranty
12. 3/8" Fully walkable roof decking
13. Thermo-Foil insulation
14. Fiberglass batten insulation
15. 1/8" Ceiling decking with vinyl protection

FLOOR CONSTRUCTION (R-40)*

16. Residential grade high density carpet with stain protection
17. Residential grade carpet padding
18. 6 layer "Bedrock" laminated floor system featuring: Darko wrap, wood backing, aluminum structure, high density block foam, and Astro-Foil insulation, thermo-insulation
19. Therma-Shield holding tank insulation featuring: One piece fluted polypropylene fully enclosed subfloor, fiberglass batten insulation, and ducted heat

TIRES AND CHASSIS

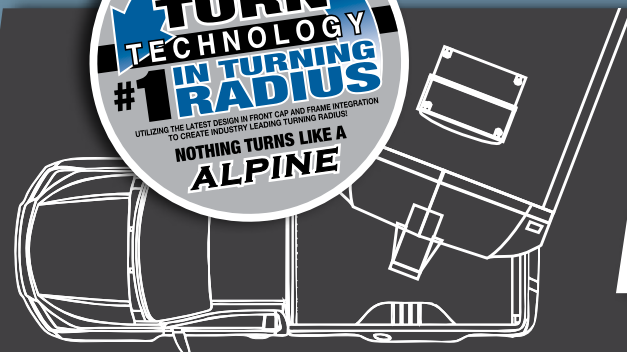
20. 12" steel "powder coated" steel I-beams
21. 16" E-Load radial tires
22. EZ-Lube 8 lug, 7,000lb axles
23. Suspension with steel shackles and greasable brass bushings

WHISPER AIR SYSTEM



The Whisper Air System Combines:

- Industry leading High Performance Heat Pump
- Comfort Control Center for total climate programmability
- The quiet efficiency of an innovative Ducted Return System that pulls return air from the entire coach, ...just like your home.



MAX TURN TECHNOLOGY

The latest in integrated frame and front cap design allows for an industry best 79° Truck to Fifth-Wheel angle. What does that mean?

That means that with MAX-TURN TECHNOLOGY backing into even the tightest of campsites is made simple. No other frame/cap design in the industry can offer this much maneuverability! With a conventional RV frame it can be difficult to make those tight right hand turns. With MAX-TURN TECHNOLOGY, making 90° turns is never a problem. This design by Keystone not only offers unmatched turning capabilities but also uses a one piece frame design. The one-piece front rail design maximizes strength while increasing maneuverability.

ALPINE **FULL PAINT** *Options*

Choose between three different full paint options:
■ Malibu Sand ■ Arctic Sky ■ Midnight Merlot

**MALIBU
SAND**



**ARCTIC
SKY**



**MIDNIGHT
MERLOT**



Optional **ONE TOUCH 6-POINT LEVEL-UP SYSTEM**



- Power up/power down system weighs less than 80 lbs. TOTAL
- Leveling jacks operate in pairs, eliminating the worry of twisting and damages
- Extruded jack legs made of 6061-TG anodized aluminum alloy



SET UP YOUR CAMPSITE IN SECONDS

Camp sites and dry camping opportunities are rarely level. Even well maintained sites can have an uncomfortable slope. Once the unit is hooked up to your site, other nuances can occur: coach rocking, doors swinging, cookware rolling or sliding, or appliances not functioning properly. Setting up camp can be equally as annoying. To achieve level, as many as four manual or electric jacks may need to be adjusted. Manual jacks can rust over time making this job even more difficult and time consuming. Simply put, camping shouldn't be this difficult! Enough is enough! It's time for Level Up!

One touch **AUTO LEVEL feature!**

INTERIOR *Decor*



EBONY VINE



IVY LEAGUE



FRENCH ROAST



CHURCHILL

EXTERIOR *Features*



**THERMA
SHIELD³⁷**
INDUSTRY LEADING R-37 HOLDING TANK ENCLOSURE

-4° Outside



72° Inside

COMFORT INDOORS

With an impressive list of industry-leading construction advancements, Alpine sets the bar for four season living. But don't just take our word for it — look at these official test results from a world leader in heating and cooling technology — Dometic Corporation. Subjected to below zero temperatures inside their legendary test chamber, the following temperatures were recorded inside an Alpine with the thermostat set at 74°;

Living room	72°
Bedroom	70°
Bathroom	75°
Pass-Thru/Utility Center.....	58°*

Of course, inside temperatures are only part of the story. With our industry leading “Therma-Shield 37” package, all the holding tanks and dump valves remained completely operational on our test unit with recorded temperatures consistently above 50° in these critical areas. Not everyone needs this kind of protection, but when four season comfort becomes important, make sure you demand the very best... demand an Alpine!

*Testing was done in a controlled independent environment.



A



B



C



D



E



F

G



A. 60" STALL SHOWER – Many of the Alpine bath areas feature a 60" full size fiberglass stall shower with a triple glass door. It is like taking a shower outdoors but with the piece of mind of always having privacy.

B. STAINLESS STEEL KITCHEN – One look at the Alpine kitchen and you know there is something special happening. You will find a name brand, residential size convection/microwave, stainless steel range, 12" deep stainless sink along with a four door, oversized refrigerator. The kitchen even includes a built in soap dispenser.

C. 50 AMP CORD CADDY – The 50 AMP Cord Caddy is located in the pass through compartment next to the water works center. Different than an electrical system, the Cord Caddy easily rolls the 50 AMP cord without binding. The Cord Caddy was even tested with a frozen 50 AMP cord and operated just as easy as if was 60 degrees.

D. SOLID SURFACE COUNTERS, SINK COVERS, HINGED RANGE COVER – Not only does Alpine use some of the finest solid surface material available, Alpine includes fitted sink covers and range cover. The range cover is hinged so that storage is convenient, easy and out of the way.

E. OVERSIZED PASS THROUGH STORAGE – One look at the Alpine's basement pass through tells the story- the Alpine boasts the industry's largest pass-through storage at over 170 cubic feet. You won't have to worry about your possessions sliding around as we have used non-skid rubber diamond flooring and metal D-rings to secure them. As part of the Alpine's standard Therma-Shield insulation, you will relax knowing that there is ducted heat to the storage area as well.

F. LARGEST ENTRY DOOR – The industry's largest entry door- over 6'3" tall and 3' wide- makes getting into and out of your Alpine the easiest around. When the door opens, the

recessed lighting turns on within the threshold both inside the unit and outside onto the four, easy to reach, platform steps. Over the exterior door, there is a motion activated safety light. This safety feature will help when coming home late at night as well as to deter unwanted guests.

G. WATER WORKS CONVENIENCE CENTER – This fully enclosed area houses dump valves, low point drains, exterior quick disconnect hose, water hookups, satellite/ cable hookups, and EZ winterization station.

STANDARDS & Options



EXTERIOR FEATURES

- 16" E-load radial tires w/ 8 wheel lugs
- Heavy duty 7,000lb axles
- Easy lube axles
- 12" -Beams with Z-frame technology
- "No Sweat" vented attic system
- 50 AMP service w/ detachable power cord
- Hydraulic selector valves for slideouts
- Hydraulic front landing jacks w/ 8" diameter all-terrain landing pads
- Gutters w/ rain spouts
- Rear Ladder
- One-Touch electric awning package w/ adjustable arms
- Tinted 80% safety-glass windows
- Electric rear jacks
- MAXTURN high-gloss fiberglass front cap & rear featuring 30% better turning radius, aerodynamic design w/ 18% better drag efficiency and hitch assist back up mirror w/ lights
- High Gloss exterior sidewalls, baggage doors, and entry door
- Class "A" style dual latch "slam" baggage doors
- Keyless Entry
- Easy open 4-step entry steps w/ recessed rope lighting for visibility
- Super-size 6'4" tall, 30" wide entry door
- Motion activated porch lighting
- Deluxe Graphics package
- High Gloss fiberglass rear cap
- Reverse (back up) lights
- One piece polypropylene underbelly
- Triple insulated, ducted and heated holding tanks

ALL-IN-ONE "WATERWORKS" EXTERIOR UTILITY CENTER

- Easy siphon winterization system
- Water heater bypass
- Enclosed low point drain valves
- Ducted heat for cold weather protection
- Dump valves
- 110V outlet
- Black tank spray hookup

SUSPENSION

- Improved impact absorption
- Improved axle equalization
- Greasable "wet" bolts
- Long lasting 1/2" steel shackles plates
- Long lasting bronze bushings

UPGRADED APPLIANCE PACKAGE

- Stainless steel stove, range, micro/convection
- 30" Convection oven/microwave
- 12 Gallon DSI 2-way water heater
- 42,000BTU furnace
- Digital "Smart" Thermostat with dual zone capability
- Heavy duty residential ball bearing drawer guides
- Extra deep, fully extendable drawers

DELUXE SOLID SURFACE PACKAGE FEATURING

- Solid surface countertops
- Flush Mounted solid surface range cover
- Solid surface sink cover
- Stainless steel extra deep sink with dual bowls
- High rise, single lever kitchen faucet
- Maximixed kitchen storage w/ more drawers and pantry space

SUPER CINEMA PACKAGE

- Huge LED TV
- True surround sound system w/ subwoofer and directionals
- Name brand DVD player
- Digital TV antenna w/ built in booster
- Dual cable & satellite hookups

INTERIOR FEATURES

- "Sleep & Store" upgraded sofa and air mattress in LR
- 4 high back dinette chairs with built in storage
- Residential dinette w/ wide base, hidden leaf, and center storage
- Extra tall 6'5" main slide height
- Day/night shades
- Ceiling fan with upgraded lighting fixtures
- Electric roof vent in kitchen
- LP leak detector
- "One Place Command Center" centrally located operational switches & gauges
- Huge shower with molded seat
- Translucent glass shower door & enclosure
- Hand held massaging shower head
- Skylight over shower
- Porcelain toilet
- Single level master bedroom suite
- Residential 70"x80" king bed
- "Cloud Nine" pillow top mattress
- Residential style headboard
- Cross ventilation bedroom windows where available
- Quilted bedspread and pillows

ALPS PACKAGE

NORTH FACE INSULATION PACKAGE

- Triple insulated
- Heated basement
- Heat ducting to tanks
- Heated "Water Works" area

SURE-ROAD BUNDLE

- Class "A" style slam baggage doors
- Rear power jacks
- Hydraulic front jacks
- High gloss sidewalls & doors
- Electric one-touch awning
- Suspension system

GOLD KEY SECURITY BUNDLE

- Outside motion activated lighting
- Automatic threshold lighting
- Keyless Entry

BEDROCK BUNDLE

- Double laminated flooring
- 12" I-beams w/ Z-frame technology
- Industry's largest pass-through storage

CHATEAU PACKAGE

WHISPER AIR BUNDLE

- 15,000BTU A/C w/ cold air return vents
- Digital "Smart" Thermostat with dual zone capability
- Heat Pump
- Dual zone temperature control

REWARDS INTERIOR BUNDLE

- LED "Northern" ceiling lights
- Black Forest Cherry w/ hardwood doors, drawers, stiles and Fascia
- Premium sofa w/ air mattress
- Huge LCD TV
- 12G DSI water heater
- Surround sound with sub woofer

ULTIMATE KITCHEN BUNDLE

- Solid surface countertops, sink, and range cover
- Stainless steel appliances
- Range w/ sealed burners & 22" oven
- 30" Convection oven/microwave
- Maximixed kitchen storage w/ more drawers and pantry space

RETREAT COLLECTION

- Deluxe Black Forest Cherry wardrobe doors
- Cedar lined walk-in closet w/ dressing bench and storage
- Stackable washer/dryer prep
- Cloud Nine pillow top mattress

OPTIONS

- | | | |
|----------------------|-----------------------|--------------------------------|
| • Trail Air Pin Box | • Vent Fan in bedroom | • RVIA Seals |
| • Slide Awning Pkg | • Bedroom A/C | • Go RVIA MEP Fee |
| • Generator Prep | • Dual Pane Windows | • Bedroom TV |
| • 13 cu ft Refer | • End Table w/ Lamp | • 6-Point Self-Leveling System |
| • Central Vac | • Winterization Kit | |
| • Electric Fireplace | • Canadian Compliance | • 50 AMP Cord Caddy |



www.keystonerv.com/Alpine

2642 Hackberry Drive | PO Box 2000 | Goshen, IN 46527-2000 | (574) 535-2100

Product information is as accurate as possible as of the date of publication of this brochure. Features, floor plans, and specifications are subject to change without notice. Please also consult Keystone's web site at www.keystonerv.com for more current product information and specifications. **Tow Vehicle Disclaimer. CAUTION: Owners of Keystone recreational vehicles are solely responsible for the selection and proper use of tow vehicles. All customers should consult with a motor vehicle manufacturer or their dealer concerning the purchase and use of suitable tow vehicles for Keystone products. Keystone disclaims any liability or damages suffered as a result of the selection, operation, use or misuse of a tow vehicle. KEYSTONE'S LIMITED WARRANTY DOES NOT COVER DAMAGE TO THE RECREATIONAL VEHICLE OR THE TOW VEHICLE AS A RESULT OF THE SELECTION, OPERATION, USE OR MISUSE OF THE TOW VEHICLE.**

January 2013