

# HIGH COUNTRY Montana



EXPERIENCE BUILT BY

# Montana

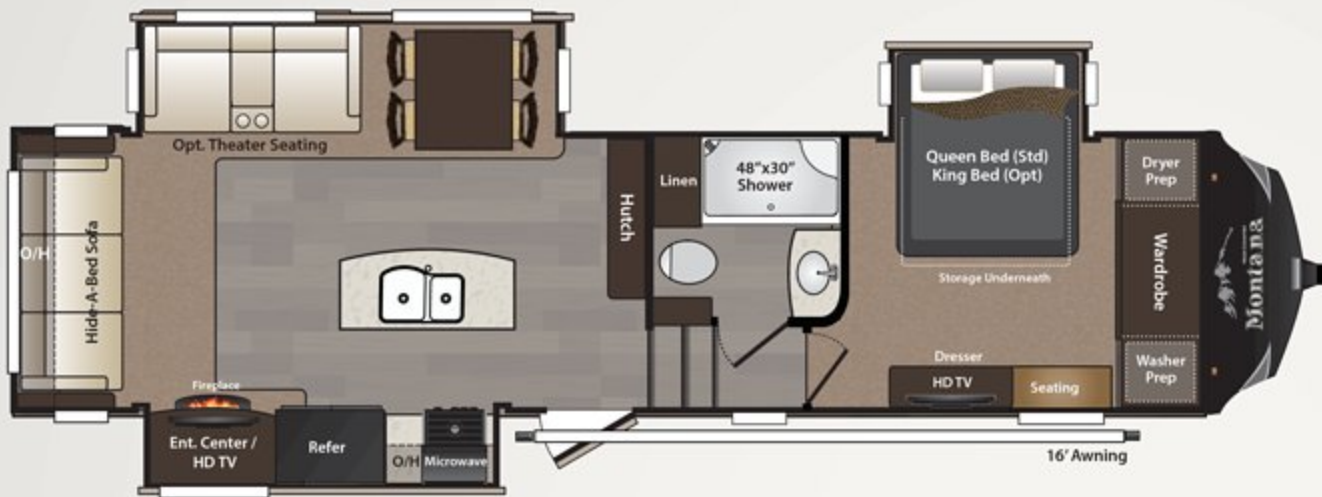
## HIGH COUNTRY



| WEIGHT | CC  | HITCH | LENGTH | HEIGHT | FRESH WATER | WASTE WATER | GRAY WATER | LPG |
|--------|-----|-------|--------|--------|-------------|-------------|------------|-----|
| TBD    | TBD | TBD   | TBD    | TBD    | TBD         | TBD         | TBD        | TBD |

**293RK**

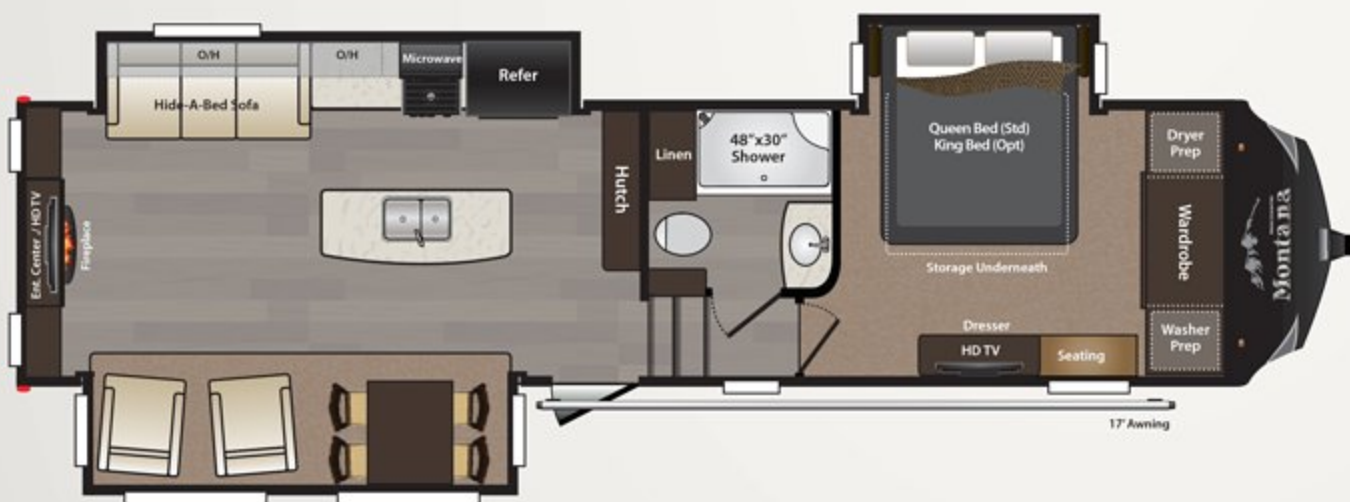
*\*New specs for 293RK with king bed coming soon*



| WEIGHT | CC  | HITCH | LENGTH | HEIGHT | FRESH WATER | WASTE WATER | GRAY WATER | LPG |
|--------|-----|-------|--------|--------|-------------|-------------|------------|-----|
| TBD    | TBD | TBD   | TBD    | TBD    | TBD         | TBD         | TBD        | TBD |

**305RL**

*\*New specs for 305RL with king bed coming soon*



| WEIGHT | CC   | HITCH | LENGTH | HEIGHT | FRESH WATER | WASTE WATER | GRAY WATER | LPG |
|--------|------|-------|--------|--------|-------------|-------------|------------|-----|
| 10505  | 3835 | 2340  | 34' 4" | 12' 9" | 64          | 50          | 93         | 60  |

**310RE**



| WEIGHT | CC   | HITCH | LENGTH  | HEIGHT | FRESH WATER | WASTE WATER | GRAY WATER | LPG |
|--------|------|-------|---------|--------|-------------|-------------|------------|-----|
| 11905  | 2260 | 2165  | 40' 11" | 12' 9" | 64          | 50          | 93         | 60  |

**340BH**



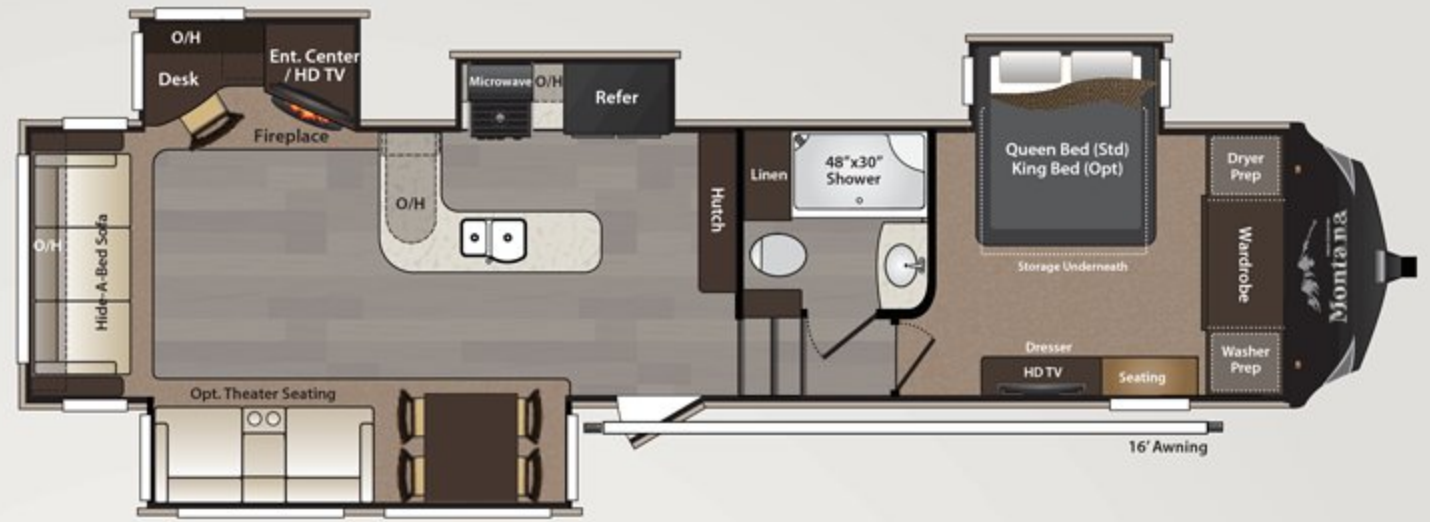
## BUY LOCALLY PURCHASING YOUR RV LOCALLY

It's up to you where you purchase your new Montana High Country, but may we suggest your local dealer? Not only does it help your local economy and provide jobs, but it will also give you an opportunity to develop a service relationship with someone that will come to know you and your coach. Congratulations on finding the best built, best equipped and best value in the industry. Happy travels!

## EXPERIENCE THE BUILD

DISCLAIMER: Product information is as accurate as possible as of the date of this brochure and is subject to change without notice. Please also consult KeyStone and specifications. Tow Vehicle Disclaimer. CAUTION: Owners of Keystone recreational vehicles should consult with a motor vehicle manufacturer for proper use of tow vehicles. All customers should consult with a motor vehicle manufacturer for proper use of tow vehicles. Keystone disclaims any liability or damages suffered as a result of the use of tow vehicles. A LIMITED WARRANTY DOES NOT COVER DAMAGE TO THE RECREATIONAL VEHICLE OR MISUSE OF THE TOW VEHICLE. \*Length is defined as the distance from the front bumper to the rear bumper.

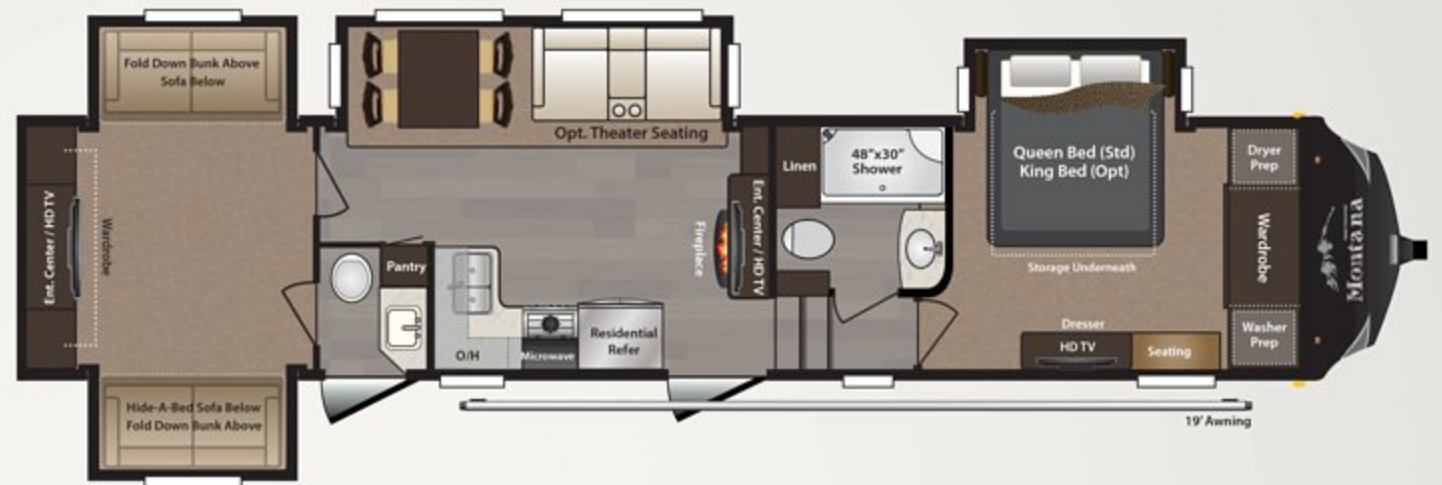
# HIGH COUNTRY Montana RV FLOORPLANS



| WEIGHT | CC  | HITCH | LENGTH | HEIGHT | FRESH WATER | WASTE WATER | GRAY WATER | LPG |
|--------|-----|-------|--------|--------|-------------|-------------|------------|-----|
| TBD    | TBD | TBD   | TBD    | TBD    | TBD         | TBD         | TBD        | TBD |

**343RL**

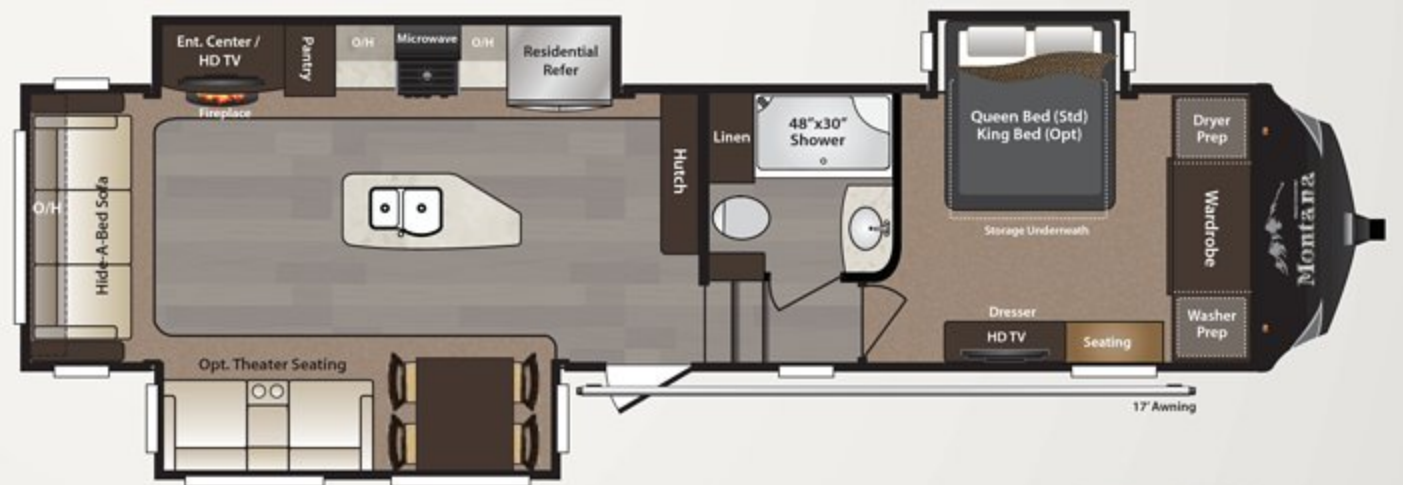
\*New specs for 343RL with king bed coming soon



| WEIGHT | CC   | HITCH | LENGTH | HEIGHT | FRESH WATER | WASTE WATER | GRAY WATER | LPG |
|--------|------|-------|--------|--------|-------------|-------------|------------|-----|
| 12245  | 2180 | 2425  | 41' 5" | 12' 9" | 64          | 93          | 93         | 60  |

**350BH  
351BH**

350BH - RV Refrigerator 351BH - Residential Refrigerator



| WEIGHT | CC   | HITCH | LENGTH | HEIGHT | FRESH WATER | WASTE WATER | GRAY WATER | LPG |
|--------|------|-------|--------|--------|-------------|-------------|------------|-----|
| 10700  | 3600 | 2300  | 36' 9" | 12' 9" | 64          | 50          | 93         | 60  |

**352RL  
353RL**

352RL - RV Refrigerator 353RL - Residential Refrigerator



| WEIGHT | CC   | HITCH | LENGTH  | HEIGHT | FRESH WATER | WASTE WATER | GRAY WATER | LPG |
|--------|------|-------|---------|--------|-------------|-------------|------------|-----|
| 12240  | 2205 | 2445  | 39' 10" | 12' 9" | 64          | 93          | 93         | 60  |

**356BH**

## STAY IN TOUCH

KEYSTONERV.COM/MONTANA-HIGH-COUNTRY

Montana High Country is always just a touch away. You'll find 360 virtual tours, location of your nearest dealer, photos, videos and all of the latest information about Montana High Country on our easy to navigate website. Everything you need can be accessed anytime, day or night, from home or on the road. You can also find us on the Keystone RV facebook.



# TENBY INC

of publication of this brochure. All features, floor plans, and specifications in  
stone's web site at www.keystonerv.com for more current product information  
recreational vehicles are solely responsible for the selection and proper use of  
or their dealer concerning the purchase and use of suitable tow vehicles for  
result of the selection, operation, use or misuse of a tow vehicle. KEYSTONE'S  
CHICLE OR THE TOW VEHICLE AS A RESULT OF THE SELECTION, OPERATION,  
m the centerline of hitch pin/coupler to rear bumper of trailer. 01.15

## MOVING TO MONTANA PACKAGE

### LIVING AREA FEATURES

- » Leather recliners
- » Leather hide-a-bed sofa
- » Pecan stained cabinetry
- » Brushed nickel cabinet hardware
- » Flush mounted LED interior lights
- » Brushed nickel decorative light fixtures
- » Residential wood window blinds
- » Contemporary window treatments
- » Ceiling fan

### KITCHEN FEATURES

- » Solid surface kitchen countertop
- » Stainless steel sink
- » High arch kitchen faucet with integrated pull down sprayer
- » Solid surface flush mount sink covers
- » Solid surface flush mount range cover
- » Stainless steel 30" over-the-range microwave
- » Stainless steel 22-inch oven with broiler
- » High output range with automatic igniter
- » 8 cubic foot double door refrigerator
- » Power vent fan with rain sensor in kitchen
- » Full extension drawer guides
- » Cabinet toe kicks

### HOME ENTERTAINMENT

- » RG-6 satellite prep
- » HD Digital TV antenna with booster
- » 40" HD flat panel TV in living area
- » 32" HD flat panel TV in bedroom
- » DVD Player
- » Soundbar with FM Tuner and Bluetooth

### BEDROOM FEATURES

- » Queen (60 by 80-inch) innerspring mattress
- » Fabric bedroom headboard
- » Two bedside windows in slide out
- » Reading light over bed
- » Bedroom closet prepped for combo OR 2 piece washer/dryer with separate 20amp circuits for each appliance

### BATHROOM FEATURES

- » Seamless 48" x 30" fiberglass shower
- » Sky light over shower
- » Deluxe porcelain toilet
- » 10 gallon DSI gas/electric water heater

### COOLING SYSTEM

- » Main Level 15,000 BTU Free Flow Air Conditioning
- » Wire and frame for ducted 2nd A/C in Bedroom

## HIGH COUNTRY PACKAGE

### CONSTRUCTION

- » Helium technology construction (Up to 2500 lbs lighter!)
- » Welded aluminum framed walls and floors
- » Glacier Package with R-10 sidewall, R-21 floor and R-38 roof insulation

### TOWING

- » Max Turn front cap and radius frame with Hitch Vision™
- » MOR/ryde CRE 3000 Suspension
- » 16" 8-Lug Aluminum wheels
- » Dexter E-Z Lube axles
- » Back-up lights
- » Under mount spare tire and carrier

### EXTERIOR

- » Black painted front cap
- » High gloss gray fiberglass sidewalls
- » Automotive frameless windows
- » 30" Wide entry door
- » Fold away entry handle
- » Rear roof ladder
- » Enormous drop frame pass thru storage compartment
- » Slam latch pass thru storage compartment doors

### EASY SET UP FEATURES

- » Wide stance electric front jacks
- » Electric rear stabilizer jacks
- » 12v electric awning with LED lights
- » Dual patio security lights

### Central exterior water and convenience center

- Outside shower with quick connect hose
- Black tank flush
- Easy winterization kit
- Water heater bypass
- Power tank fill
- Enclosed low point drains
- Battery disconnect
- Cable/satellite hook-ups
- 12v light

## OPTIONS

### INTERIOR OPTIONS

- » King Bed
- » 12 Cubic foot 4 door refrigerator
- » Residential French door refrigerator with bottom freezer and 1000 Watt inverter (351, 353, 375)
- » Electric fireplace
- » Free standing dinette with 4 chairs
- » Leather theater seating in place of recliners
- » Leather theater seating in place of living area hide-a-bed (350, 351, 356)
- » High back desk chair (343)

### EXTERIOR OPTIONS

- » Electric automatic leveling system
- » Dual pane frameless windows
- » Low profile ducted 2nd 13,500 BTU A/C
- » Black slideout awnings package
- » Generator ready (Onan 5.5 KW specifications)
- » Onan Marquis Gold 5.5 KW LP generator



VISIT OUR WEBSITE TO VIEW INTERIOR PHOTOS, 360 VIRTUAL TOURS AND MUCH MORE.



HIGH COUNTRY  
**Montana**

2642 Hackberry Drive  
PO Box 2000  
Goshen, IN 46527-2000  
(574) 535-2100

**Keystone RV Company**  
WWW.KEYSTONERV.COM

JAN. 2015

YOUR LOCAL DEALER:



360° VIRTUAL TOUR AVAILABLE AT KEYSTONERV.COM

**SCAN ME** >>>>

FOR MORE INFORMATION ON MONTANA HIGH COUNTRY FIFTH WHEELS ALONG WITH OTHER GREAT CONTENT



**DSI**  
Annual RVDA DEALER SATISFACTION INDEX