

DUTCHMEN

DUTCHMEN 2011 Travel Trailers & Destination Trailers

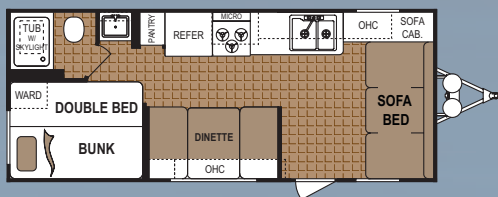


DUTCHMEN

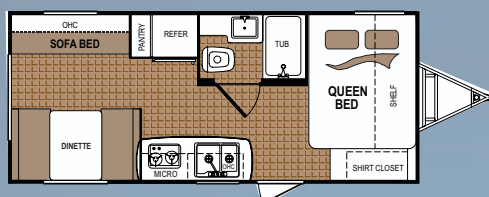
Travel Trailers & Destination Trailers

Sport Floorplans

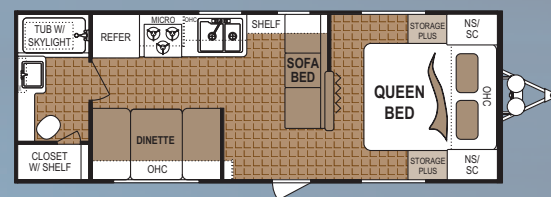
185DB



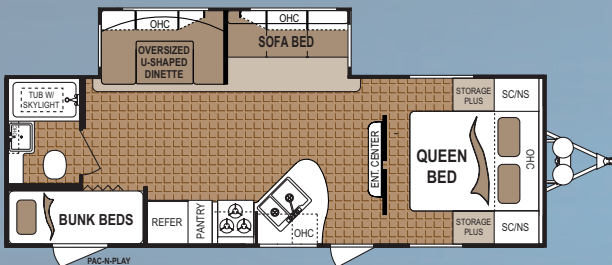
196RD



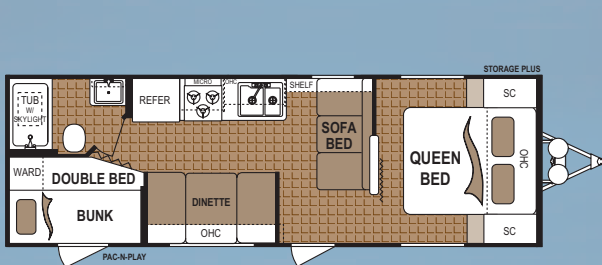
255RB



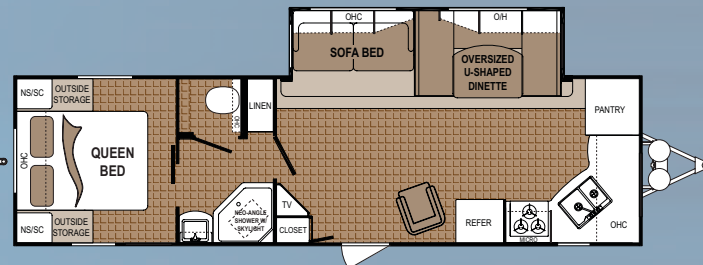
265BHS



275BH

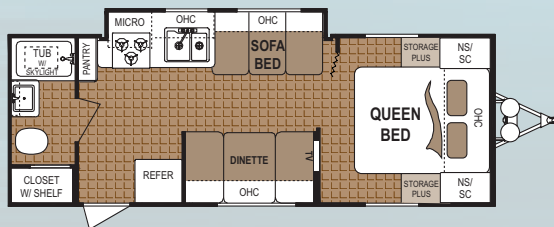


296FKS

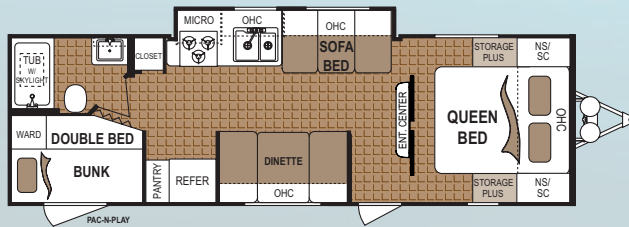


Lite Floorplans

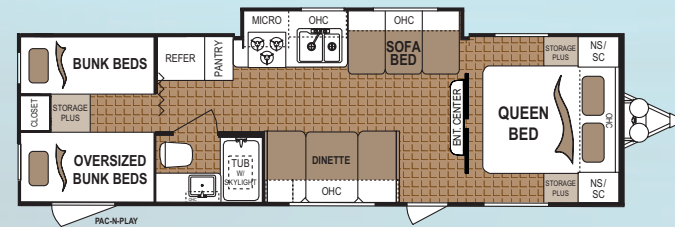
257RBGS



286BHGS

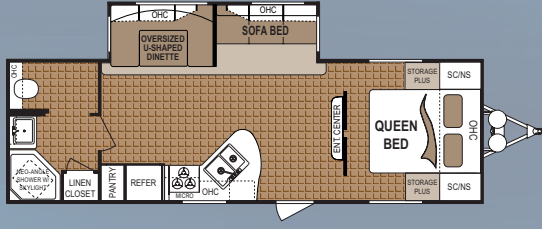


295BHGS

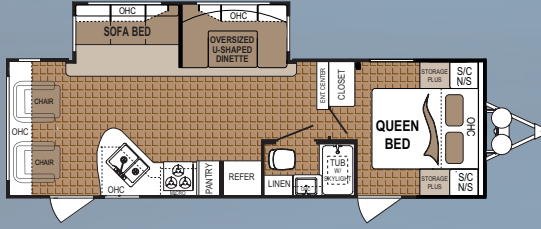


Classic Floorplans

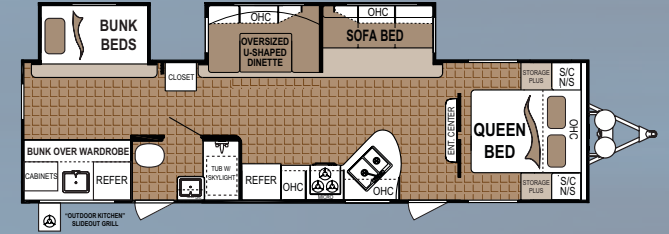
276RBS



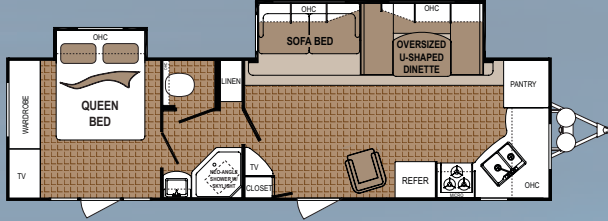
277RLS



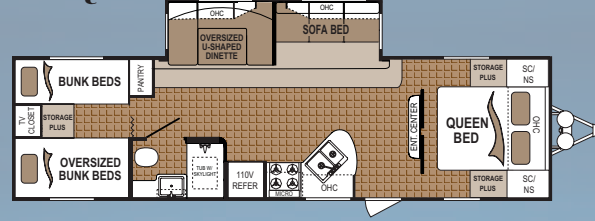
315BHDS



316FKDS



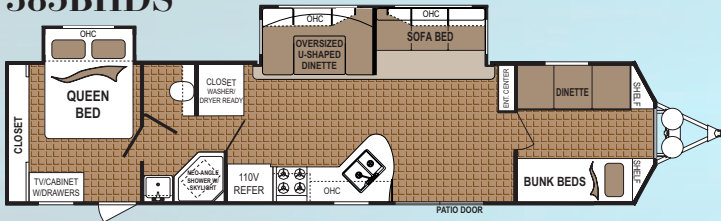
317QBS



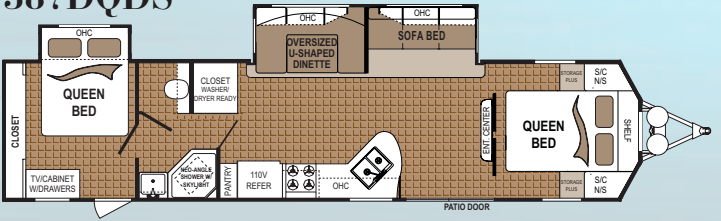
Follow Dutchmen RV on Facebook, Twitter and YouTube

Destination Floorplans

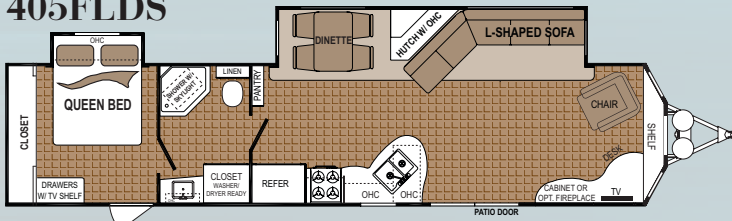
385BHDS



387DQDS



405FLDS



Weights and Specifications

| Model | Hitch | Unloaded Weight | Cargo Capacity | Height | Length | Fresh Water (gal) | Black Water (gal) | Grey Water (gal) | Furnace BTU | Tire Size |
|--------------------|-------|-----------------|----------------|---------|---------|-------------------|-------------------|------------------|-------------|----------------|
| Sport | | | | | | | | | | |
| 185DB | 444 | 4262 | 3438 | 10' 4" | 23' 11" | 52 | 42 | 42 | 20,000 | ST205/75R14(C) |
| 196RD | 453 | 3926 | 3674 | 9' 11" | 22' 11" | 52 | 42 | 42 | 18,000 | ST205/75R14(C) |
| 255RB | 485 | 4148 | 3552 | 10' 4" | 26' 2" | 52 | 42 | 42 | 25,000 | ST205/75R14(C) |
| 265BHS | 804 | 6202 | 3478 | 11' 0" | 28' 10" | 52 | 42 | 42 | 30,000 | ST225/75R15(D) |
| 275BH | 604 | 4646 | 3054 | 10' 4" | 28' 7" | 52 | 42 | 42 | 25,000 | ST205/75R14(C) |
| 296FKS | TBD | TBD | TBD | TBD | TBD | TBD | TBD | TBD | TBD | TBD |
| Lite | | | | | | | | | | |
| 257RBGS | 462 | 5004 | 2696 | 10' 4" | 26' 3" | 52 | 42 | 42 | 25,000 | ST205/75R15(C) |
| 286BHGS | 676 | 5476 | 2224 | 10' 4" | 29' 11" | 52 | 42 | 42 | 30,000 | ST205/75R15(C) |
| 295BHGS | 780 | 5920 | 1780 | 10' 4" | 31' 8" | 52 | 42 | 42 | 30,000 | ST205/75R15(C) |
| Classic | | | | | | | | | | |
| 276RBS | 708 | 6368 | 3312 | 10' 11" | 30' | 52 | 42 | 42 | 30,000 | ST225/75R15(D) |
| 277RLS | 775 | 6151 | 3529 | 11' 11" | 30' | 52 | 42 | 42 | 30,000 | ST225/75R15(D) |
| 315BHDS | 1064 | 7826 | 1854 | 11' | 34' 11" | 52 | 42 | 42 | 34,000 | ST225/75R15(D) |
| 316FKDS | 1406 | 7393 | 2287 | 11' 8" | 34' 2" | 56 | 42 | 84 | 34,000 | ST225/75R15(D) |
| 317QBS | 963 | 6628 | 3052 | 11' | 33' | 52 | 42 | 42 | 34,000 | ST225/75R15(D) |
| Destination | | | | | | | | | | |
| 385BHDS | 932 | 8478 | 2698 | 11' 4" | 39' 6" | 56 | 42 | 78 | 34,000 | ST225/75R15(D) |
| 387DQDS | 954 | 8456 | 2720 | 11' 4" | 39' 6" | 56 | 42 | 78 | 34,000 | ST225/75R15(D) |
| 405FLDS | 950 | 8724 | 2452 | 11' 8" | 39' 6" | 56 | 42 | 78 | 34,000 | ST225/75R15(D) |

| DUTCHMEN VALUE ADDED PACKAGE | Sport | Lite & Classic | Destination Trailers |
|--|-------|----------------|----------------------|
| Power Awning with Adjustable Legs | N/A | STD | N/A |
| Manual Awning with Adjustable Legs | STD | N/A | OPT |
| Awning Prep | STD | STD | STD |
| Detachable 30 Amp Power Cord | STD | STD | N/A |
| LP Quick Connect | STD | STD | STD |
| Front Diamond Plate Rock Guard | N/A | STD | N/A |
| Slam latch Baggage Doors | N/A | STD | N/A |
| 30 lb LP Bottles With Deluxe ABS LP Bottle Cover | N/A | STD | STD |
| 20 lb LP Bottles | STD | N/A | N/A |
| Patio Light | STD | STD | STD |
| Front & Rear Stabilizer Jacks | OPT | STD | STD |
| Extended Rain Gutters | STD | STD | STD |
| Tinted Safety Glass Windows | STD | STD | STD |
| "XL" Pass Thru Storage Compartment (See Floorplans) | STD | STD | N/A |
| 12V AM/FM/CD In Wall Stereo With MP3/IPOD® Input | N/A | STD | STD |
| 12V AM/FM/CD Under Mount Stereo With MP3/IPOD® Input | STD | N/A | N/A |
| Interior and Exterior Speakers | STD | STD | STD |
| "Store More" Cabinets Design | STD | STD | STD |
| Large Pots And Pan Drawer - With Full Extension Ball Bearing Drawer Glides | N/A | STD | STD |
| Residential Microwave Oven With Carousel | STD | STD | STD |
| Auto Ignition 3 Burner Range With Oven | OPT | STD | N/A |
| 3 Burner Cooktop | STD | N/A | N/A |
| Large Double Door Gas/Electric Refrigerator | STD | STD | OPT |
| Extra Large, Double Bowl Sink With High Rise Faucet | STD | STD | STD |
| Artisan Glass Cabinet Doors | STD | STD | STD |
| Swivel Chairs (see floorplans) | STD | STD | STD |
| Flip-Over Sofa (see floorplans) | STD | STD | STD |
| 12 Volt Power Exhaust Roof Vent In Bath | N/A | STD | STD |
| Foot Flush Toilet | STD | STD | STD |
| Electronic Power Converter With Battery Charger | STD | STD | STD |
| Designer Bedding Package With Bedspring And Headboard | STD | STD | STD |
| Designer Window Valances With Woven Shades | N/A | STD | STD |
| Designer Window Valances With Mini Blinds | STD | N/A | N/A |
| Deluxe Inner-Spring Quilted Mattress | STD | STD | STD |
| 6 Gallon Gas/Electric/DSI Water Heater | N/A | STD | STD |
| 6 Gallon GAS/DSI Water Heater | STD | N/A | N/A |
| Water heater By-Pass | STD | STD | STD |
| Large Furnace | STD | STD | STD |
| 13.5 BTU Roof Air Conditioning | STD | STD | N/A |
| Monitor Panel | STD | STD | STD |
| Smoke Detector | STD | STD | STD |
| Carbon Monoxide Detector | STD | STD | STD |
| LP Leak Detector | STD | STD | STD |

INTERIOR FEATURES

KITCHEN

| | | | |
|---|-----|-----|-----|
| Power Range Hood With 12 Volt Light And Exhaust Fan | STD | STD | STD |
| Built In Countertop Extension Where Possible | STD | STD | STD |
| Sink Cover | N/A | STD | STD |
| Full Extension ball bearing drawer guides | N/A | STD | STD |

BEDROOM FEATURES

| | | | |
|--|-----|-----|-----|
| Prepped For Flat Screen TV In Bedroom (See Floorplans) | N/A | STD | STD |
| Lift-Up Bed Platform With Storage Below (See Floorplans) | STD | STD | STD |
| Reading Lights | STD | STD | STD |
| Privacy Curtains Or Sliding Bedroom Doors | STD | STD | STD |

| BATHROOM FEATURES | Sport | Lite & Classic | Destination Trailers |
|---|-------|----------------|----------------------|
| ABS Tub & Shower Surround | OPT | STD | STD |
| Glass Shower Door For Neo-Angle Shower Models | STD | STD | STD |
| Space Maker Tub with Bowed Shower Curtain | STD | STD | STD |
| Hardwood Medicine Cabinet With Mirror | N/A | STD | STD |
| GFI Protected 110 Volt Duplex Receptacles | STD | STD | STD |
| Skylight Over Tub Or Shower | N/A | STD | STD |

"SUPER SLIDE" SLIDE ROOMS

| | | | |
|---|-----|-----|-----|
| 155" Extra Wide Super Slide Rooms (See Floorplans) | STD | STD | STD |
| Oversized 83" X 48" U-Shaped Dinette (See Floorplans) | STD | STD | STD |

"STORE MORE" CABINETRY

| | | | |
|--|-----|-----|-----|
| Full Access Cabinets, Larger Drawers | STD | STD | STD |
| Raised Panel Hardwood Cabinets Doors In Galley | N/A | STD | STD |
| Hardwood Cabinets Doors And Drawer Fronts Throughout | STD | STD | STD |

OTHER INTERIOR FEATURES

| | | | |
|---|-----|-----|-----|
| Premium Residential Furniture | STD | STD | STD |
| Large Slide-Out Overhead Cabinets | STD | STD | STD |
| Premium Slide-Out Fascia | STD | STD | STD |
| 12 Volt Lights Over Dinette | STD | STD | STD |
| Flat Panel TV Prep | STD | STD | STD |
| Digital TV Antenna With Booster | STD | STD | STD |
| Wired For Cable/Satellite | STD | STD | STD |
| 110 Volt Interior And Exterior Duplex Receptacles | STD | STD | STD |
| Premium 12 Volt Water Pump | STD | STD | STD |

CONSTRUCTION

CHASSIS

| | | | |
|---|-----|-----|-----|
| Heavy Duty Steel I-Beam Frame | STD | STD | STD |
| Dual Battery Tray | STD | STD | STD |
| 2 5/16" Coupler | STD | STD | STD |
| Break-Away Trailer Switch | STD | STD | STD |
| Heavy Duty Safety Chains | STD | STD | STD |
| 12V Electric Slide-Out Motor With Override (see floorplans) | STD | STD | STD |
| Easy Lube Axles | STD | STD | STD |
| Easy-Fold Entry Steps | STD | STD | STD |
| Rear Bumper With Sewer Hose Storage | STD | STD | STD |

ARMOR GUARD PROTECTION PACKAGE

| | | | |
|---|-----|-----|-----|
| Enclosed And Heated Fresh Water Tank | N/A | STD | STD |
| Water Tank Mounted Below Floor To Increase Interior Storage | STD | STD | STD |
| 46 Gallon Fresh Water Tank | STD | STD | STD |

FLOOR

| | | | |
|--------------------------------------|-----|-----|-----|
| 3 5/8" Thick Floor Structure | STD | STD | STD |
| 5/8" Tongue and Groove Floor Decking | STD | STD | STD |
| R7 Fiberglass Insulation | STD | STD | STD |
| Beau Flor Premium Vinyl Flooring | STD | STD | STD |

ROOF

| | | | |
|---|-----|-----|-----|
| Truss Style Walk-On Roof With Fiberglass Insulation | STD | STD | STD |
| EPDM Rubber Roof With 12 Year Mfg Warranty | STD | STD | STD |
| 3/8" Roof Decking | STD | STD | STD |
| Roof Ducted Air Conditioning (Slide Out Models) | STD | STD | STD |

Some features listed above may be part of a value package - Contact your local dealer for the details. Product information, specifications and photography in this brochure were as accurate as possible at time of printing. Prices and specifications are subject to change without notice. All capacities are approximate and dimensions are nominal. Some features are optional.

| WALLS | Sport | Lite & Classic | Destination Trailers |
|---|-------|----------------|----------------------|
| Aerodynamic Front Profile With Lower Diamond Plate Rock Guard | N/A | STD | N/A |
| Heavy Duty .024" Mesa Sidewall Metal | STD | STD | STD |
| R7 Fiberglass Insulation | STD | STD | STD |
| Prepped For Rear Ladder | N/A | STD | STD |
| Radius Corner Entry Door with Screen | STD | STD | STD |
| Pac-N-Play Storage - See Floorplans | STD | STD | N/A |
| Large Picture Window At Dinette | STD | STD | STD |
| Folding XL Entry Handle | N/A | STD | N/A |
| 120V Exterior Outlet | STD | STD | STD |

OTHER EXTERIOR FEATURES

| | | | |
|-------------------------|-----|-----|-----|
| Spare Tire With Carrier | OPT | STD | OPT |
| Exterior Wash Station | N/A | STD | STD |

ACU-WEIGHT CERTIFICATION

| | | | |
|---|-----|-----|-----|
| Real Weights - All Units Weighed Before Leaving The Factory | STD | STD | STD |
|---|-----|-----|-----|

ADDITIONAL DESTINATION TRAILER FEATURES

| | | | |
|--|--|--|-----|
| DVD Player | | | STD |
| Hide-A-Bed Sofa | | | STD |
| Sliding Glass Patio Door | | | STD |
| 110V Residential Refrigerator | | | STD |
| Free Standing Residential Oven and Range | | | STD |
| 15,000 BTU A/C - Ducted | | | STD |
| 50 Amp Service | | | STD |
| 2nd AC Prep | | | STD |

OPTIONAL FEATURES

| | | | |
|---|-----|-----|-----|
| 24" or 26" Flat Screen HD LCD TV (See Floorplans) | OPT | OPT | OPT |
| Comfort Air Hide-A-Bed with Air Mattress | OPT | OPT | STD |
| Fiberglass Sidewall Package | OPT | OPT | OPT |
| Fully Enclosed Underbelly | N/A | OPT | OPT |
| Free-Standing Dinette (Large Slide Models) | N/A | OPT | OPT |
| Radial Tires (Mandatory) | OPT | OPT | OPT |
| Spare Tire and Carrier | OPT | STD | OPT |
| CoachNet Roadside Assistance Program (Mandatory) | OPT | OPT | OPT |

ADDITIONAL DESTINATION TRAILER OPTIONS

| | | | |
|--|--|--|-----|
| Fireplace | | | OPT |
| Washer Dryer Prep w/10 Gallon Water Heater | | | OPT |
| 15,000 BTU A/C Upgrade | | | OPT |
| 26" Entry Door IPO Sliding Glass Door | | | OPT |

Your Local Dealer