



# REDWOOD

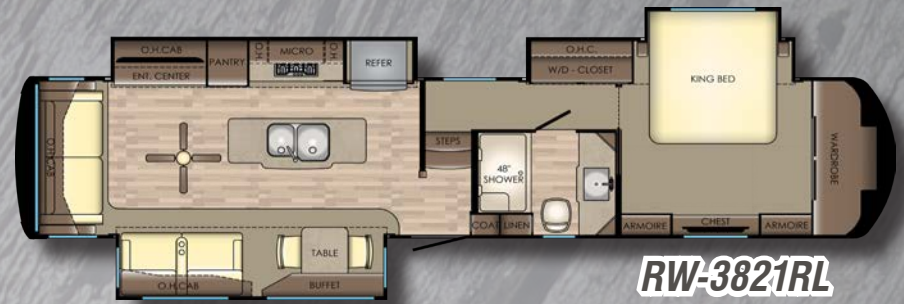
LUXURY VEHICLES



*The Foundation of Luxury*



**RW-3401RL**



**RW-3821RL**



**RW-3881ES**



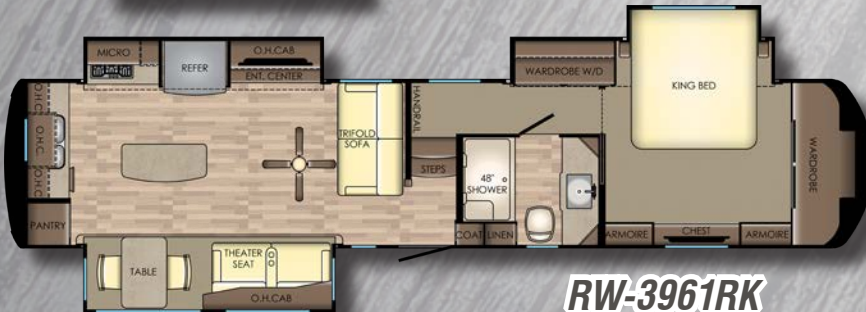
**RW-3901MB**



**RW-3901WB**



**RW-3941FL**



**RW-3961RK**



**RW-3991RD**

MODEL	RW-3401RL	RW-3821RL	RW-3881ES	RW-3901WB	RW-3901MB	RW-3941FL	RW-3961RK	RW-3991RD
DRY WEIGHT	13482	14498	14514	14326	14510	14592	14384	14576
LENGTH	36' 8"	40' 3"	41' 8"	40' 2"	40' 2"	41' 10"	40' 11"	41' 5"
EXT. HEIGHT W/ A/C	13' 6"	13' 6"	13' 6"	13' 6"	13' 6"	13' 6"	13' 6"	13' 6"
FRESH WATER	62 Gal	62 Gal	62 Gal	62 Gal	62 Gal	62 Gal	62 Gal	62 Gal
BLACK WATER	45 Gal	45 Gal	45 Gal	44 Gal	88 Gal	45 Gal	45 Gal	45 Gal
GRAY WATER	88 Gal	88 Gal	88 Gal	88 Gal	88 Gal	90 Gal	132 Gal	88 Gal



## DECORS



Ansley



Kingston

All new high gloss wood finish comes standard in every Redwood RV. This mirror like finish on our Cherry cabinets is made possible through a seven step, sanding process. Each piece of cabinetry is built and inspected by hand so there is no mass machining involved. The biscuit corners are glued and nailed to give these cabinets plenty of strength and durability. The finished product has the highest sheen rating available to give you a truly residential look.

**Relax. You're**  
**iN-Command**  
**FINALLY A SYSTEM**  
**YOU CAN TRUST.**



7 Function Tru-Sit Thomas Payne Massage Theatre Seating & Chill/Heat Cup Holders



MORryde LRE 4100 Suspension System w/ 17.5" H Range Tires & 8K Axles



Solid Step Entry Steps with Lift Assist

iN-Command embraces the next generation of controls for your Redwood RV by acting as the central hub of operations and puts you at the helm using your preferred smart device. But how does this all-encompassing system work? What, exactly, does it monitor and control? Let's take a closer look at iN-Command piece by piece.

The Display Commander is your primary point of contact with iN-Command. All of the switches and monitoring panels that have cluttered up interior walls in the past are integrated into this one sleek, touch screen monitor. What really makes the Display Commander stand out, however, is that it can be controlled remotely with a smart device using the free JENSEN iN-Command mobile app. This app performs all of the same functions as the Display Commander, but from the convenience of your mobile device.

Our F.I.T. Chassis is made from the best components available!



#1 SELLING LUXURY 5<sup>TH</sup> WHEEL OVER THE LAST 5 YEARS

- ✓ **Never lose your controller**
- ✓ **Unlimited Users**
- ✓ **When you have your phone, you're iN-Command**

Checkout the website for more information! [www.redwood-rv.com](http://www.redwood-rv.com)

# STANDARDS AND OPTIONS

## KITCHEN & APPLIANCES

- Solid Cherry Hardwood Cabinetry
- Hardwood Stiles Pre-Drilled & Screwed Together
- Residential Sized Storage Drawers
- Pots & Pans Storage
- Full-Extension Ball-Bearing Drawer Guides
- Residential Soft Close Hidden Hinges
- EGS Steel Backed Cabinet Anchors
- Residential Pantry w/ Pullout Drawers & 110v Outlet
- Solid Surface Countertops
- Matching Solid Surface Sink Covers
- Tile Backsplash
- Oversized 60/40 Stainless Steel Sink
- High Rise Faucet w/ Pull Out Sprayer
- Over-Island Lighting
- 22 Ft<sup>3</sup> Residential Refrigerator w/ 1K Watt Inverter (In all Residential Models)
- 18 Ft<sup>3</sup> Side-by-Side Norcold Refrigerator w/ Ice Maker (In all RV Refrigerator Models)
- Residential 3-Burner Gas Cooktop
- 30" Stainless OTR Microwave w/ Exhaust Fan
- Max Air Fan w/ Rain Sensor
- Residential Style Oven

## BEDROOM

- iCool™ Gel Foam King Bed
- 110v Outlets on Both Sides of Bed
- USB Ports on Both Sides of Bed
- 39" LED HDTV
- Residential Dresser w/ Drawers
- Walk-In Closet with Shelving (8 ft. wide)
- Night Roller Shades
- 2<sup>nd</sup> 15k BTU Whisper Quiet A/C w/Heat Pump

## LIVING AREA

- Thomas Pane Collection Furniture Package:
  - Residential Hide-a-Bed Sofa
  - Tru-Sit 7 Function Recliners Theatre Seating
  - Buffet -Style Adjustable Dinette w/ Leaf Extension (VBM)
  - 2 Premium Dinette Chairs
  - 2 Folding Dinette Chairs
- Day/Night Roller Shades

- 55"-65" HDR HDTV (VBM)
- Bluetooth Entertainment System w/ Soundbar & Powered Subwoofer
- Pre-wired for Winegard® Satellite Systems
- 2 USB Ports Beside Sofa
- Additional USB Ports w/ Buffet Models
- Ceiling Fan (VBM)
- 5,100 BTU Fireplace

## BATHROOM

- One Piece Fiberglass Shower
- Domed Skylight in Shower
- Porcelain Foot Flush Toilet
- Heat & A/C Duct in Bathroom
- Max Air Fan w/ Rain Sensor
- Adjustable Handheld Shower Head
- Solid Surface Countertops

## GENERAL INTERIOR

- Energy Management System (EMS)
- iN-Command™ Smart Automation System
- LED Recessed Ceiling & Accent Lights
- Solid Hardwood Slide Fascia
- 7' Interior Slide Room Height
- 15,000 BTU Whisper Quiet A/C
- 35,000 BTU Furnace
- Residential Carpet w/ Pad
- Maximum Linoleum Throughout
- Central Vacuum w/ Power Dust Pan
- Magnetic Door Stops

## CONSTRUCTION

### Chassis

- Custom FIT Chassis
  - Falcon 12"/10" I-Beam Drop Frame
  - Flex Air Pin Box
  - Falcon Hydraulic Slide Out System w/ Manual Override (Main Slides)
  - Falcon 8,000 lb. Axles
  - MORryde LRE 4100 Suspension System
  - 6-Point Hydraulic Jacks w/Auto Leveling
  - MORryde Lift Assist Steps
  - Falcon 2" (3,000 lb.) Receiver Hitch
  - 17.5 H Rated Tires (w/ Spare)

## Sidewalls

- 2" Laminated Wall
- Sanded Block Foam Insulation
- Double Welded Aluminum Frame
- Double Luan Backer
- High-Gloss Gel Coat Fiberglass

## Floor

- 5/8" Floor Decking
- 3" Aluminum Subfloor - 11" on Center (VBM)
- 2 Layers of Batten Fiberglass Insulation
- 1 Layers of Radiant Tech Foil Insulation
- Darco Moisture Barrier
- Corrugated Underbelly
- Fully Enclosed & Heated Underbelly

## Roof

- One Piece Alpha-Ply Roof Material
- 5" Reinforced Trussed Roof Rafter System
- Double Trusses at each A/C
- 3/8" Roof Decking
- 1 Layers of Batten Fiberglass Insulation
- 1 Layer of Radiant Tech Foil Insulation
- Fully Walkable

## General Exterior

- Straight Roof Line (Luxury Profile)
- Front & Rear Insulated Fiberglass Caps
- LED Pin Box Light
- 2nd Power Awning w/ LED (VBM)
- Docking Station w/ All Hookups & Black Tank Flush
- Insulated Slam Latch Baggage Doors
- Fully Finished & Heated Pass-Through Storage w/ Netting
- Radio in Pass-Through
- Exterior Speakers w/ LED Lights
- Bauer Keyed-A-Like Lock System
- (2) 45 Gallon Grey Tanks (VBM)
- 45 Gallon Black Tank (VBM)
- Tanks Heated via Forced Heat
- 12 gal. DSI Hot Water Heater
- Enclosed & Heated Water Lines
- Seamless Residential Insulated Heat Ducts

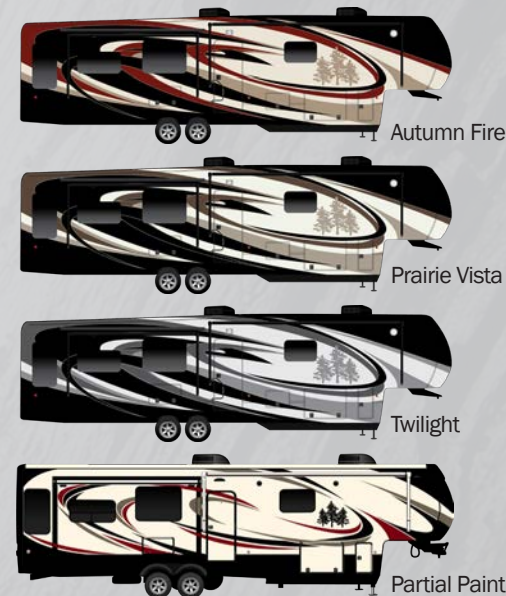
- 2-Zoned Radius House A/C Ducting System
- Frameless Dual Pane Windows
- Wireless Backup Camera Prep
- Progressive 90 Amp/12v DC Power Converter
- Power Cord Reel-Electric (VBM)
- 110v Exterior Receptacle
- Aluminum Wheels
- 3-3/8" Self-Adjusting Drum Brakes
- (2) 30 lb. LP Tanks w/Auto Change Over

## Options

- High Efficiency Dishwasher
- 3rd 15,000 BTU A/C
- Electric Induction Cooktop
- 5.5 Onan LP Generator
- Holding Tank Heating Pads
- Slide Awning Package
- Disc Brakes
- Full Body Paint
- Wireless Backup Camera w/ Monitor
- Generator Prep

\*VBM - Varies By Model

## PAINT OPTIONS



www.redwood-rv.com • 1140 W. Lake St Topeka, IN 46571 • (260) 593 - 3850

DISCLAIMER: Product information is as accurate as possible as of the date of publication of this brochure. All features, floor plans, and specifications in this brochure are subject to change without notice. Please also consult Redwood's web site at www.redwood-rv.com for more current product information and specifications. Tow Vehicle Disclaimer. CAUTION: Owners of Redwood recreational vehicles are solely responsible for the selection and proper use of tow vehicles. All customers should consult with a motor vehicle manufacturer or their dealer concerning the purchase and use of suitable tow vehicles for Redwood products. Redwood RV disclaims any liability or damages suffered as a result of the selection, operation, use or misuse of a tow vehicle. CROSSROADS' LIMITED WARRANTY DOES NOT COVER DAMAGE TO THE RECREATIONAL VEHICLE OR THE TOW VEHICLE AS A RESULT OF THE SELECTION, OPERATION, USE OR MISUSE OF THE TOW VEHICLE. REFERENCE CROSSROADS RV COMPANY OWNERS MANUAL FOR LIMITED WARRANTY DETAILS. \*Length is defined as the distance from the centerline of hitch pin/coupler to rear bumper of trailer.

