

# BEACON

2018



VANLEIGH  
— BUILT AROUND YOU —







## VANLEIGH

We understand that you have many options to consider when purchasing a new RV, and we thank you for taking the time to consider ours. Our family has been in the RV manufacturing industry for over 40 years. The Vanleigh team gets to work well before dawn every morning with one goal in mind, to create the best built product in the marketplace. We believe in building a product that we would want to RV in, whether it's for a weekend getaway or a yearlong hiatus. That's why every Vanleigh is made knowing that our customer's journey is their home.



BUILT-IN ADVENTURE



365 DAYS

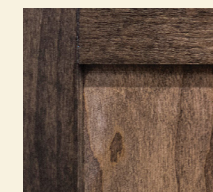
*A Year*



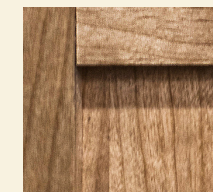


STANDARD  
SOLID WOOD  
Cabinetry

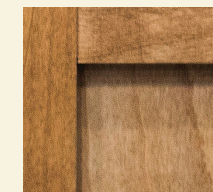
All of our wood cabinetry is made of solid wood and is manufactured on-site in the Vanleigh cabinet shop.



Mocha



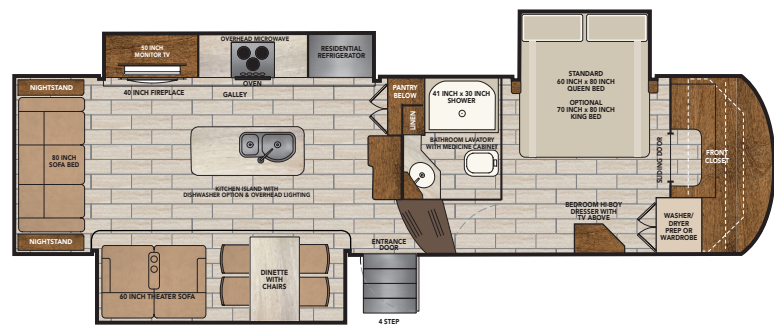
Amber Glaze



English Chestnut

FLOOR PLANS

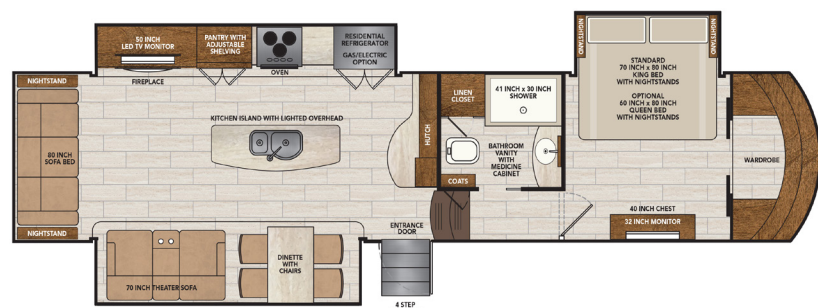
34RLB REAR LIVING BEACON



2018 SPECIFICATIONS

- GVWR 18,000
- Dry Weight 13,000\*
- Cargo Carrying 5,000
- Width 101"
- Height 12' 11" \*\*
- Length 34' 11" \*\*\*
- Fresh Water Cap. 54 gal
- Grey Water Cap. 90 gal
- Black Water Cap. 45 gal
- Water Heater 10 gal
- Furnace 42K BTU
- LP Cap. 60 lbs
- Hitch Weight 2,600\*\*\*
- \* unloaded and based off of an average
- \*\* to top of A/Cs
- \*\*\* from pinbox to rear ladder based on standard build, no options
- \*\*\*\* unloaded and based off of an average

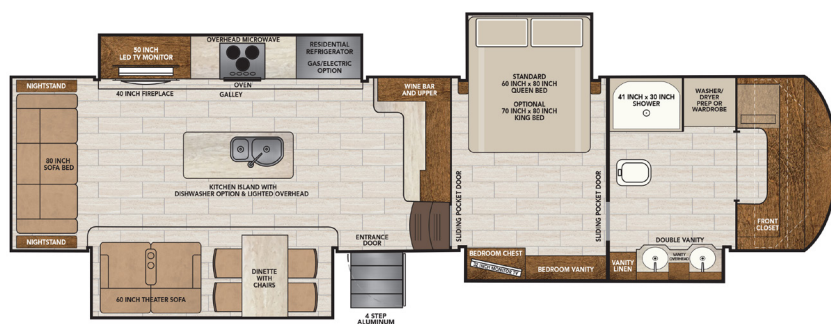
38RLB REAR LIVING BEACON



2018 SPECIFICATIONS

- GVWR 18,000
- Dry Weight 13,600\*
- Cargo Carrying 4,400
- Width 101"
- Height 12' 11" \*\*
- Length 38' 11" \*\*\*
- Fresh Water Cap. 54 gal
- Grey Water Cap. 90 gal
- Black Water Cap. 45 gal
- Water Heater 10 gal
- Furnace 42K BTU
- LP Cap. 60 lbs
- Hitch Weight 2,800\*\*\*\*
- \* unloaded and based off of an average
- \*\* to top of A/Cs
- \*\*\* from pinbox to rear ladder based on standard build, no options
- \*\*\*\* unloaded and based off of an average

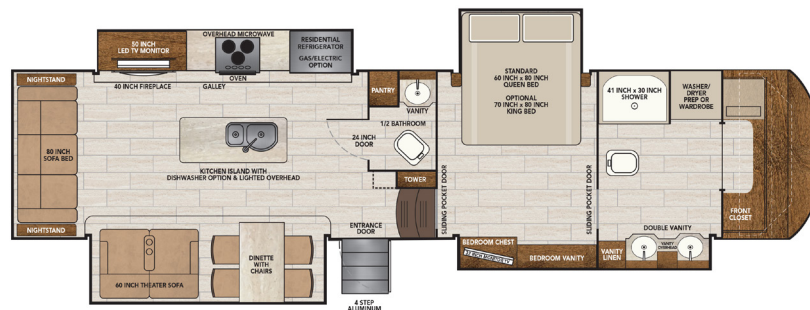
39GBB GRAND BAR BEACON



2018 SPECIFICATIONS

- GVWR 18,000
- Dry Weight 14,600\*
- Cargo Carrying 3,400
- Width 101"
- Height 12' 11" \*\*
- Length 38' 11" \*\*\*
- Fresh Water Cap. 54 gal
- Grey Water Cap. 90 gal
- Black Water Cap. 45 gal
- Water Heater 10 gal
- Furnace 42K BTU
- LP Cap. 60 lbs
- Hitch Weight 3,100\*\*\*\*
- \* unloaded and based off of an average
- \*\* to top of A/Cs
- \*\*\* from pinbox to rear ladder based on standard build, no options
- \*\*\*\* unloaded and based off of an average

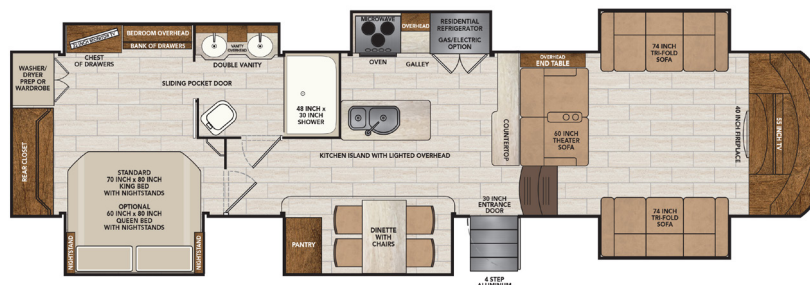
39FBB FRONT BATH BEACON



2018 SPECIFICATIONS

- GVWR 18,000
- Dry Weight 14,700\*
- Cargo Carrying 3,300
- Width 101"
- Height 12' 11" \*\*
- Length 38' 11" \*\*\*
- Fresh Water Cap. 54 gal
- Grey Water Cap. 90 gal
- Black Water Cap. 45 gal
- Water Heater 10 gal
- Furnace 42K BTU
- LP Cap. 60 lbs
- Hitch Weight 3,100\*\*\*\*
- \* unloaded and based off of an average
- \*\* to top of A/Cs
- \*\*\* from pinbox to rear ladder based on standard build, no options
- \*\*\*\* unloaded and based off of an average

40FLB FRONT LIVING BEACON



2018 SPECIFICATIONS

- GVWR 18,000
- Dry Weight 15,100\*
- Cargo Carrying 2,900
- Width 101"
- Height 12' 11" \*\*
- Length 40' 6" \*\*\*
- Fresh Water Cap. 54 gal
- Grey Water Cap. 90 gal
- Black Water Cap. 45 gal
- Water Heater 10 gal
- Furnace 42K BTU
- LP Cap. 60 lbs
- Hitch Weight 3,300\*\*\*\*
- \* unloaded and based off of an average
- \*\* to top of A/Cs
- \*\*\* from pinbox to rear ladder based on standard build, no options
- \*\*\*\* unloaded and based off of an average

WHAT ARE YOU WAITING FOR?

There's never been a better time than "right now" to make your dreams come true. So don't wait any longer.

GO TO: [vanleighrv.com](http://vanleighrv.com) and build your own Vanleigh Beacon!





# THE BEACON 39GBB

## THE GRAND BAR BEACON FROM VANLEIGH:

Solid Surface Handlaid Backsplash Grand Bar Counter with built-in Wine Cooler

Hanex Solid Surface Countertops

Motor home style bedroom w/ opposing slides

Over 6 ft wide pass-through storage

Ultra Sheen Cabinet Finish

8 ft slide boxes in kitchen and living room

Motorhome style macerator toilet (Tecma)

6 ft 6 in ceiling height in bedroom/bath







WEEKEND FORECAST:  
  
**ESCAPE**  
*The Ordinary*



40 FLB Front Living Living Kitchen  
 Ultra Sheen English Chestnut Cabinetry



Full Bath w/ Dual Vanity



Master Suite w/ Standard King Bed



38 RLB Rear Living Kitchen | Ultra Sheen Mocha Wood Cabinetry

**BEACON** 38RLB



38 RLB Rear Living Kitchen Galley  
 Ultra Sheen Mocha Wood Cabinetry



38RLB Standard King



40 FLB Front Living Great Room | Ultra Sheen English Chestnut Cabinetry



**BEACON** 40FLB



34 RLB Rear Living Kitchen  
 Ultra Sheen Amber Glaze Wood Cabinetry



34 RLB Standard King

**BEACON**  
 34RLB





### LIVING AREA

- Full Profile Ceiling Throughout
- Full Overlay Hardwood Cabinetry and Faceframes
- Hardwood Slide-Out Fascia Throughout
- Hardwood Window Valances Throughout
- 8 ft Main Floor Slideout Boxes
- Multiplex Wiring System w/ Digital Homescreen
- Soft Touch Padded Vinyl Ceiling Throughout
- Recessed LED Ceiling Lighting Throughout
- Roller Shades (Night)
- Dimming Function on Living and Bedroom Area Lighting
- High Quality Furniture Made in the U.S.A.
- Ceiling Fan
- Dirt Devil® Central Vac System

### KITCHEN

- Solid Surface Kitchen Countertops
- Solid Surface Sink and Range Covers
- Residential Freendo Kitchen Faucet with Pull Down Sprayer
- Stainless Steel Microwave and Oven
- Residential Chef Collection Burner Range - Furrion
- 18 cu ft Samsung French Door Refrigerator
- 1,000 watt Pure Sine Wave Inverter - Magnum
- Stainless Drawer Guides
- Solid Surface Dinette Table and Chairs
- Legless Dinette Table
- Oversized 70/30 Stainless Steel Sink
- Galley Area Air Automatic Ceiling Vent
- Hardwood Ceiling Décor Package with Recessed LED Lighting
- Oversized Pantry with Motion Sensored Lighting
- Tile Backsplashes
- Convection Microwave

### HOME ENTERTAINMENT

- 50 in LED TV in Living Area
- 7200 BTU Residential Fireplace
- Sound Bar with Surround Sound in Living Area
- Entertainment Center with Bluetooth, DVD, Aux. Controls

- Exterior Speakers
- 32 in LED Bedroom TV
- Prewire for Solar Panels
- King Jack™ Digital Antennae

### BEDROOM

- Cool Gel Memory Foam™ King/Queen Mattress
- Dual USB Ports in Nightstands
- Backlit Handrail to Bedroom
- Solid Vinyl Flooring throughout Bedroom
- Hardwood Window Valances
- Residential Hardwood Headboard
- Hardwood Drawer Dresser
- Full-Sized Wardrobe with Motion Sensored Lighting
- Full-Sized Underbed Storage Area

### HEATING AND COOLING

- Dual Low-Pro 15000 BTU A/Cs Standard Coleman Mach 8
- Prewire for Third 15000 BTU A/C with Triple Zone Thermostat
- 42000 BTU Furnace
- 7200 BTU Electric Fireplace
- R-45 Floor and Roof Insulation
- R-11 Sidewall Insulation
- Whisper Quiet A/C System
- Fully Enclosed and Heated Underbelly with Heat Return
- 12V Electric Tank Heaters
- 10 gal Gas/Electric Quick Recovery Hot Water Heater
- 16 in Wide Return A/C Ducts for Max Airflow

### EXTERIOR AND CONSTRUCTION

- Noble T60 High Gloss Fiberglass Exterior
- Tubular Aluminum Framed Sidewalls
- 12V Electric Dump Gates for Black and Gray Tank with Manual Override
- 16 in on Center Tubular Aluminum Floor
- 16 in on Center Aluminum Roof Joists
- Framed, Laminated, and Insulated Slide Box Floors and Ceilings
- Laminated Slide Box End Walls

- Aluminum A/C Boxes Welded to Frame
- Roof Backer for All Crown Molding
- Tubular Aluminum Upper Support Wall
- Dual Copper Water Manifolds
- Powdercoated Aluminum Wet Bay
- Standard "G" Rated Tires
- Labeled Wire Harnesses
- Protective Wire Looms
- LED Exterior Lighting System
- Prewire for Backup Camera
- Slam-Latch Baggage Doors
- Motion Sensored Lighting in Pass-Through Compartment

### OPTIONAL EQUIPMENT

- Generator Prep
- Prewire for Traveler Satellite
- Residential Dishwasher (excluding the 375FL)
- Third 15000 BTU Low Profile A/C
- Second Awning Mounted to Slidebox
- Dual Pane Windows
- Solar Shades (Day Shades)
- Electric Power Cord Reel
- Gas/Electric Refrigerator
- 5.5 Onan Marquis Gold LP Generator
- Splendide Front Load Washer & Dryer
- Heat Pump

Some interior furnishings not included. Some photos shown in literature have optional equipment. All options may not be available in every model. Because of progressive improvements, specifications, standard and optional equipment are subject to change without notice or obligation. For a complete and up-to-date list of available options and specifications, as well as VanLeigh's full line of RVs, visit [vanleighrv.com](http://vanleighrv.com).

# BEACON

— BUILT AROUND YOU —



VANLEIGH







## BUILT AROUND YOU

We've always prided ourselves in putting our owners first. To build the best product and service it, with the same quality and care. It's at the core of who we are. We appreciate your consideration of Vanleigh.

— Van, Leigh and Bob Tiffin



# All warranties are not created equal.



See why ours stand the test. At Vanleigh, building a quality coach is our primary focus. Our warranty reflects our confidence in the construction of our units. From the beginning phases of production, we have pressurized water on our units. Throughout our production process, we run systems checks on every component in the RV. Once your RV is completed, it is taken outside to our onsite campground where it is hooked up to full services and put through an additional PDI inspection. We are proud to offer this accountability to our customers along with the following basic limited warranties:

### 3 Year Construction Warranty:

The structure of the welded frame of the RV is warranted for 3 years (36 months)

### 1 Year Base Limited Warranty:

Your coach has a limited warranty against defects in materials and workmanship for 12 months of ownership

### Ongoing Owner Support

Vanleigh is proud to offer exceptional customer support. E-mail us at [customercare@vanleighrv.com](mailto:customercare@vanleighrv.com) or call us at 662-612-4040. We build our units with tested and proven components. Many of these components carry their own respective warranties. Please see owner's manual for the warranties of components.



## VANLEIGH

BUILT AROUND YOU

26 Industrial Drive | Burnsville, MS 38833  
Phone 662-612-4040 | Fax 662-655-0913  
[customercare@vanleighrv.com](mailto:customercare@vanleighrv.com) • [www.vanleighrv.com](http://www.vanleighrv.com)



## TIFFIN

YOUR LOCAL VANLEIGH DEALER:

Colton RV  
North Tonawanda, NY 14120  
(716) 694-0188  
(800) 628-4889  
[www.ColtonRV.com](http://www.ColtonRV.com)